



Australian Government  
Department of Health and Aged Care

# Easy Read Paper

Intellectual Disability Health Capabilities

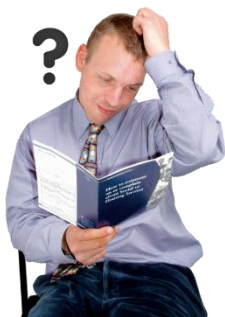
We want to know what you think



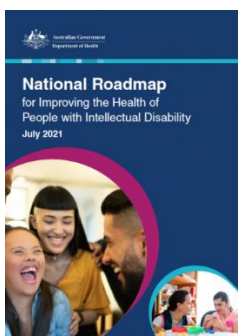
# Why we are doing this work



We want to help teach health workers to give better health care for people with intellectual disability



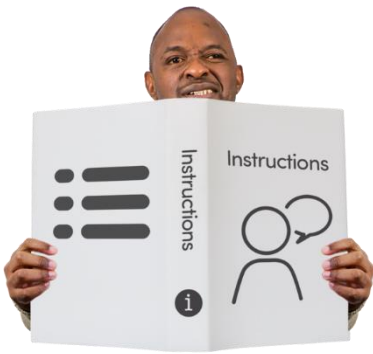
Some health workers do not learn about the best way to give health care to people with intellectual disability



The Roadmap has a part about helping health workers give better health care to people with intellectual disability



You can read about it at [www.bit.ly/HealthRoadmap](http://www.bit.ly/HealthRoadmap)



We are making a **framework** for universities

A **framework** is like a guide book



The framework will have info on what health care students need to learn about intellectual disability



Universities can use the framework to help them teach health care students

# What we want to know

We have made a list of **capabilities**



**Capabilities** are things we think health care students need to learn about intellectual disability

The capabilities will go in the framework

To make this list we talked to



- People with intellectual disability
- Support workers
- Health workers
- Teachers

The list of capabilities starts on **Page 7**

Look at the list

Do you agree with the capabilities?

Is there anything we have missed?



## How to let us know



We need your answers back by

**Friday 27 January 2023**

You can tell us by **email** or in the **online survey**

### Email



You can send us an email to tell us if you think the capabilities are good or if we have missed anything

**[intellectual.disability@health.gov.au](mailto:intellectual.disability@health.gov.au)**

### Online Survey



You can answer the questions in the online survey by clicking this link

**<https://consultations.health.gov.au/primary-care-mental-health-division/intellectual-disability-health-core-capabilities>**

The online survey is not Easy Read



You can ask for help to answer the questions online

A friend, family member or support person may be able to help you.

## What happens next



We will look at what people tell us

We will write a summary report



We will use this info to get the capabilities right



We will keep your personal info safe and private

If you have any questions or want more info you  
can email us



**[intellectual.disability@health.gov.au](mailto:intellectual.disability@health.gov.au)**

# Capability Areas - List of things health care students should learn about



This is a list of things we think that health care students should learn about

We call them **capabilities**

## Capability Area 1

They should learn about people with intellectual disability



This means knowing about

- Rights
- Having a good attitude
- Common health problems for people with intellectual disability
- Helping to get the right care

## Capability Area 2

They should learn about communication



This means knowing things like

- Talking to the person with intellectual disability
- Using devices or tools to communicate
- Communicating so that people with intellectual disability feel safe

## Capability Area 3

They should learn how to give care to people with intellectual disability



This means knowing how to

- Treat people with intellectual disability with respect

- Do things to best meet the person's needs

We call these **reasonable adjustments**

- Help people with intellectual disability to stay healthy





### **Capability Area 4**

They should learn how to work with other people like

- Health care workers
- Families and carers
- Support workers



### **Capability Area 5**

They should learn how to include the person with intellectual disability when making decisions about health care



### **Capability Area 6**

They should learn to give safe and fair support

This means knowing about

- Advocacy
- Keeping people with intellectual disability safe
- Training to be a better health care worker