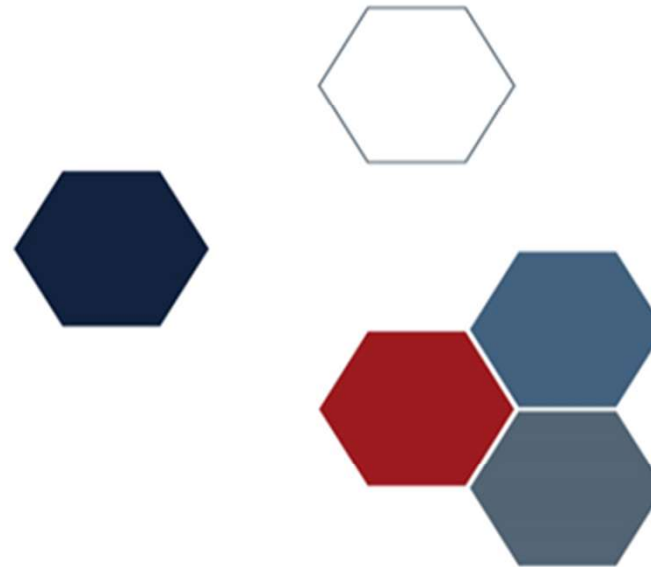




Australian Government



Medical Research

Future Fund

Traumatic Brain Injury Mission
National Consultation on the Roadmap and Implementation
Plan

Webinar



Australian Government

Medical Research Future Fund

Contents

- 1. Introduction**
- 2. Medical Research Future Fund (MRFF)**
 - i. Background
 - ii. MRFF 10-year Investment plan
- 3. Traumatic Brain Injury Research in Australia**
- 4. Traumatic Brain Injury Research Mission**
 - i. Expert Working Group
 - ii. Roadmap
 - iii. Implementation Plan
- 5. Traumatic Brain Injury Research Mission - Roadmap and Implementation Plan Consultation**
- 6. Open Discussion – Questions & Answers**
 - i. Consultation questions



Introduction

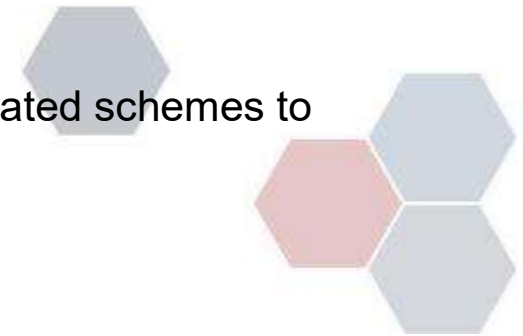
- Welcome
- No microphones will be active, only hosts are able to speak
- All questions can be sent via the interactive Q&A input
- One hour has been allocated at the end of the presentation to answer questions
- A copy of this presentation will be made available on the MRFF website



Medical Research Future Fund

MRFF Background

- Established in 2015, the \$20 billion Fund is a long-term sustainable source of research funding
- The MRFF aims to transform health and medical research and innovation to improve lives, build the economy and contribute to health system sustainability
- Complementary Government funding of health and medical research in Australia:
 - MRFF - awards funding for national priority areas that address gaps in research with a focus on research translation and commercialisation to improve the health and wellbeing of Australians
 - NHMRC - awards funding through a range of investigator-initiated schemes to build capacity and advance health and medical knowledge



Medical Research Future Fund

MRFF 10-year investment plan

- The Australian Government announced a \$5 billion, 10-year investment plan for the MRFF, as part of the 2019-20 budget
- There are 20 initiatives under four themes, funded over 10 years to harness innovation, provide vital infrastructure, improve patient outcomes, and generate jobs and economic growth



 Patients	Funding innovative treatments, supporting clinical trials, and delivering more advanced health care and medical technology to improve the health of all Australians
 Researchers	Supporting our researchers to make breakthrough discoveries, develop their skills and progress their careers in Australia
 Research missions	Helping researchers think big to tackle significant health challenges through investment, leadership and collaboration
 Research translation	Moving research ideas from the lab to the clinic, so that medical discoveries become part of clinical practice for GPs, specialists and hospitals





Australian Government

Medical Research Future Fund

MRFF Missions

- MRFF missions:
 - focus on an area of unmet need or a technology with transformational potential (priority led)
 - are planned and coordinated 10 year programs of work (strategic, Roadmap, Implementation Plan)
 - bring together key researchers, health professionals, consumers, stakeholders, industry partners (outcome focused)
 - harness resources across the system (investment, leadership and collaboration)
 - use innovative research approaches (new grant models)





Medical Research Future Fund

Purpose of consultation

- **Focus:** Mission design (Roadmap and Implementation Plan)

- **Questions:**

- Are the priority areas for investment identified in the implementation plan the most effective way for delivering on the Mission's goal and aims?
- Are there existing research activities which could be utilised to contribute to the Mission's Roadmap and/or Implementation Plan aims and priority areas for investment? How can these be leveraged?
- Are the 'Evaluation approach and measures' appropriate for assessing and monitoring progress towards the mission's goal and aims?





Medical Research Future Fund

Traumatic Brain Injury Mission

- Forms part of the MRFF 10 Year Investment Plan announced in 2019
- The mission will invest \$50 million over 10 years from 2019-20 to improve the lives of patients with traumatic brain injury



2019–20 \$m	2020–21 \$m	2021–22 \$m	2022–23 \$m	2023–24 \$m	2024–25 \$m	2025–26 \$m	2026–27 \$m	2027–28 \$m	2028–29 \$m	Total over 10 Years \$m
5.0	5.0	5.0	5.0	5.0	5.0	5.0	5.0	5.0	5.0	50.0



Traumatic Brain Injury Research in Australia

- Over 20,000 Australians are hospitalised each year with a TBI, and it's estimated that there are 200,000 TBIs in Australia each year
- Unique issues that contribute to the complexity of TBI in Australia include:
 - variability of care across metropolitan, regional, rural and remote patient demographics
 - priority populations including Aboriginal and Torres Strait Islander people, requiring cultural sensitivity
 - variability in care, particularly for mild TBI
 - mix of public and private funders of healthcare
 - lack of clear rehabilitation pathway to support integration into the community



Traumatic Brain Injury Research in Australia

- TBI research in Australia to date:
 - There has been a disconnect between acute care and rehabilitation researchers
 - Evidence based practices are not necessarily translated into improved care
 - Mild TBI research in children is very strong, as is sports related concussion research
 - There is a gap in the adult, non-sports related concussion space
 - Multiple research groups are doing good work, with historic strength in Melbourne, but was not nationally integrated
 - The sector has unified, keen interest in the work of the Mission and Connectivity (formerly Vision TBI)



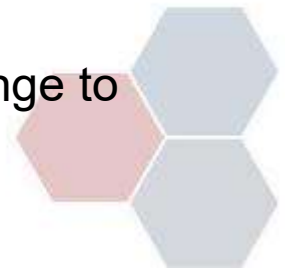
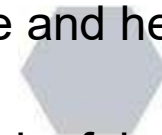


Australian Government

Medical Research Future Fund

Traumatic Brain Injury Mission Expert Working Group

- 13 members, comprising of clinicians, researchers and experts in a variety of fields, including;
 - neurotrauma, emergency services, rehabilitation services, surgery, psychology and paediatrics
- Role is to advise the Minister on the strategic priorities for research investment through the MRFF Traumatic Brain Injury Mission by defining:
 - Sectoral gaps to be addressed to transform health care and health outcomes for individuals and communities
 - Key priority activities that if addressed will deliver meaningful change to patients through the translation of research





Australian Government

Medical Research Future Fund Traumatic Brain Injury Mission

Roadmap – Goal and Mission

Our goal

- to better predict recovery outcomes after a TBI,
- identify the most effective care and treatments, and
- reduce barriers to support people to live their best life after TBI

Our mission

To accelerate research that develops and delivers innovative and effective treatments;

- that improve outcomes for people who experience TBI
- in partnership with people with TBI and carers





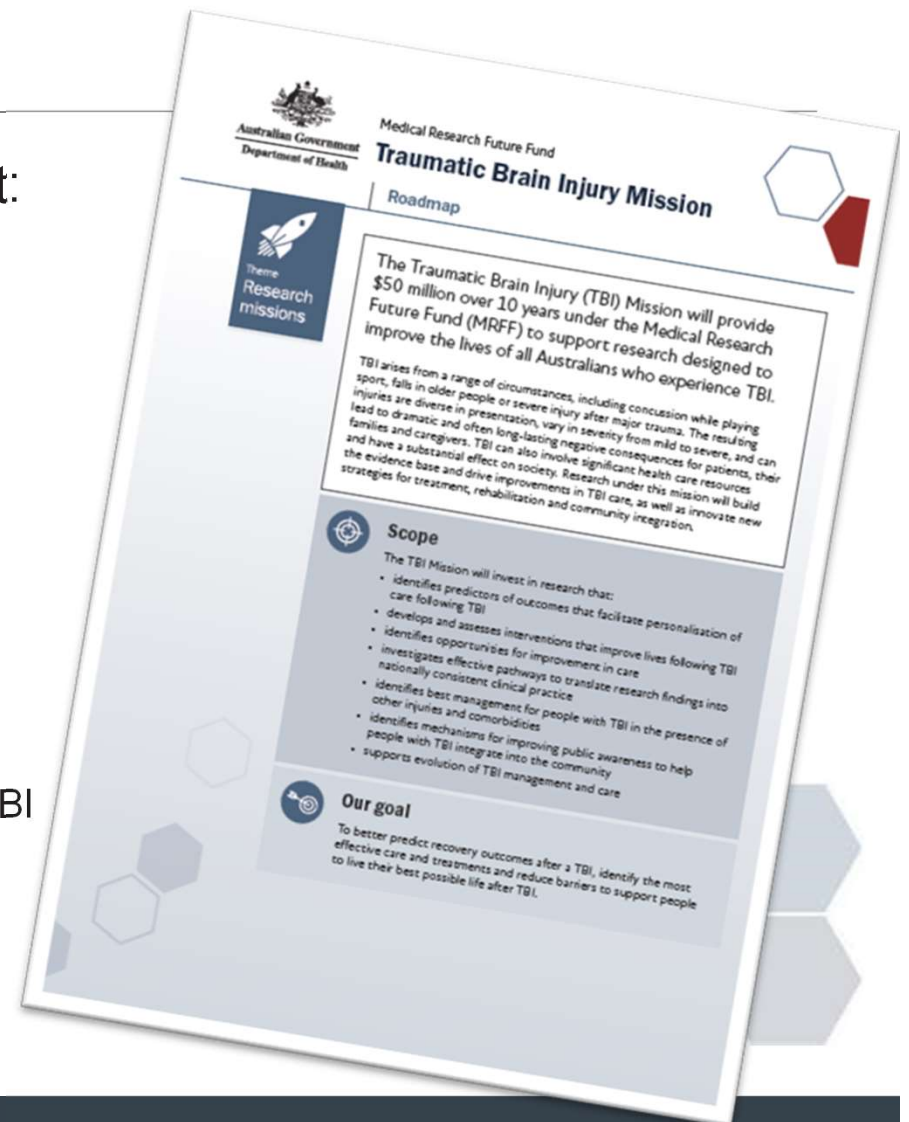
Australian Government

Medical Research Future Fund Traumatic Brain Injury Mission

Roadmap – Scope

The mission will invest in research that:

- identifies predictor of outcomes to facilitate personalised care
- develops and assesses interventions to improve lives
- identifies opportunities for improvement in care
- investigates effective pathways to translate research into national clinical practice
- identifies best management for patients in presence of co-morbidities
- improves public awareness to help people with TBI integrate into the community
- supports the evolution of TBI management and care





Australian Government

Medical Research Future Fund

Roadmap – Funding Principles

Activities funded under this mission should:

- Support nationally integrated, coordinated and evidence-based TBI research
- Support optimised TBI care in regional, rural and remote Australia, in particular vulnerable populations
- Be co-designed in partnership with people with TBI, their families and wider community
- Include a data governance framework
- Integrate with service delivery to inform prevention opportunities
- Encompass multi-centre research linked with international efforts to be in line with world best practice
- Support collaborations with other MRFF Missions, funding bodies and philanthropic organisations



Our mission

To accelerate Australian TBI research that develops and delivers innovative and effective treatments that substantially and equitably optimise and improve outcomes for people who experience TBI, in partnership with people with TBI and carers.



Funding principles

Activities funded under this mission should:

- support nationally integrated, coordinated and evidence-based TBI research of the highest quality that leads to the development of standardised and optimised models of care, translation into existing service delivery frameworks and improved outcomes
- support optimised TBI care in regional, rural and remote Australia, in particular the vulnerable populations of Aboriginal and/or Torres Strait Islander people, and culturally and linguistically diverse people with TBI
- be co-designed in partnership with people with TBI, their families and the wider community
- include a data governance framework that encompasses accessibility, data linkage and value for money
- integrate with service delivery to inform prevention opportunities, including in vulnerable populations
- encompass multicentre research linked with international efforts and in line with world best practice
- support collaboration with other missions, funding bodies and relevant philanthropic organisations to ensure sustainable and continuous improvement in TBI outcomes for all Australians

Priority areas for investment

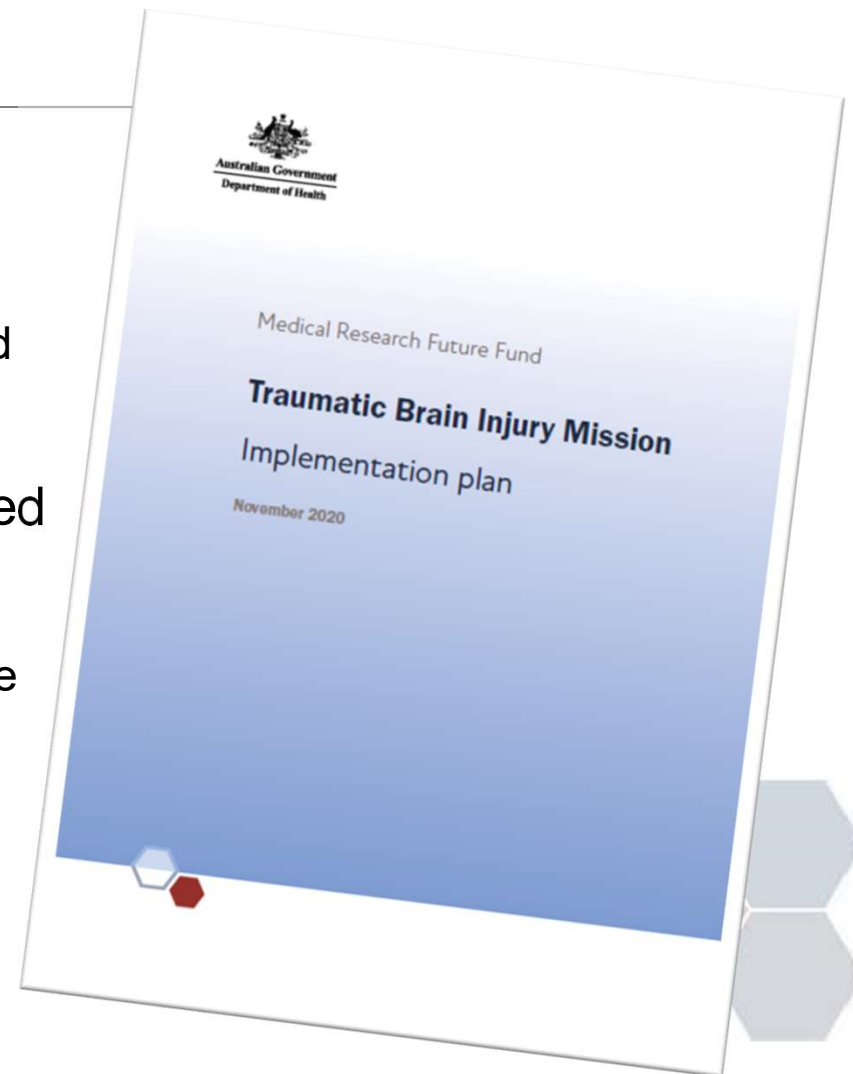
Funding will focus on:

- personalising care after moderate to severe TBI to achieve the best possible outcomes, including using predictive modelling to improve care pathways and outcomes, and helping to ensure that patients consistently receive best-practice treatment and care for moderate to severe TBI
- improving the lives of people with TBI by using better interventions, including new treatments and care applications for moderate to severe TBI, enhanced rehabilitation for people with moderate to severe TBI, and helping to ensure that patients consistently receive best-practice treatment and care for mild TBI
- identifying how to reduce barriers to support people to live their best possible life after TBI, including understanding the impact of community awareness on health and psychosocial outcomes, reducing inequalities in treatment and care, and assessing cost-effectiveness of TBI treatments and pathways

Medical Research Future Fund

Implementation Plan

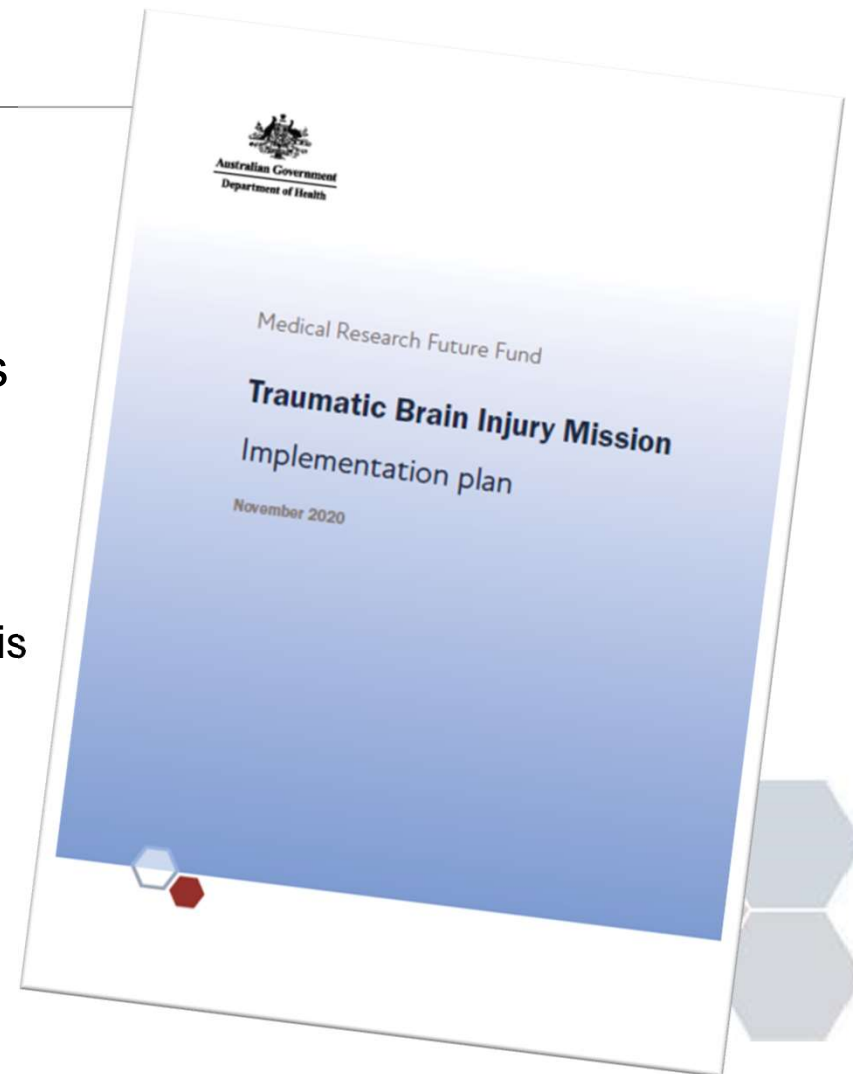
- Implementation strategy to guide research investment over the life of the Mission
 - Identify the investment activities required to achieve these goals
- Priority areas for investment allocated across the short, medium and long term time-frames
 - Identify additional activities outside of the Mission that will be required to achieve success
 - Identify opportunities to leverage additional investment



Medical Research Future Fund

Implementation Plan

- Establishes how the outcomes from each priority will be evaluated in terms of benefit to Australian patients and track the mission's progress towards its objectives
- Define what success will look like, how this might be measured and across what timeframe





Australian Government

Medical Research Future Fund

Implementation plan: Priority Areas for Investment

1. Personalise care after moderate to severe TBI

- Include predictive modelling.
- Ensure best-practice treatment and care, with guidelines informed by the new evidence base

2. Use better interventions

- Include new treatments and care, enhanced rehabilitation
- Build on collaborative data frameworks
- Best practice treatment and care for mild TBI

3. Reduce barriers to support people

- Understand impact of community awareness
- Implementation of evidence based pathways for clinical care
- Assess cost-effectiveness of the Mission



Implementation Plan: Aim 1

Personalising care after TBI to achieve the best possible outcomes

	Short-term	Medium-term	Long-term
1.1	Determine data to collect: from injury to integration into community, all Australia, <u>moderate to severe</u> TBI, consensus derived	Gather the data	
1.2	Use existing data to find ways to enhance consistency and improve outcomes, <u>moderate to severe</u> TBI + 3 grants already awarded	Use the new data to develop and implement predictive approaches and models, nationally, <u>moderate to severe</u> TBI	Research to support implementation of predictive approaches in vulnerable populations, <u>moderate to severe</u> TBI
1.3	Best practice evidence-based guidelines and protocols for acute care to rehabilitation of <u>moderate to severe</u> TBI	Research to support implementation of guidelines for <u>moderate to severe</u> TBI, including in vulnerable populations	Review and update guidelines for <u>moderate to severe</u> TBI, using the predictive approaches and assessing value of these

Implementation Plan: Aim 2

Improving the lives of people with TBI by using better interventions

	Short-term	Medium-term	Long-term
2.1	Identify treatments and interventions to test for <i>acute care</i> , consensus based, <u>moderate to severe</u> TBI	Test efficacy of identified treatments, indicators and/or interventions, <i>acute care</i> focus, building on the data	Continue
2.2	Implement existing best-practice care for <u>moderate to severe</u> TBI, psychosocial focus for community integration	Identify and test novel <i>rehabilitation</i> models and approaches, <u>moderate to severe</u> TBI, building on data	Continue
2.3	Identify best-practice care for <u>mild</u> TBI, implement via guidelines and protocols	Identify, gather and use data on <u>mild</u> TBI to develop and implement predictive approaches and models	Research to support implementation of <u>mild</u> TBI guidelines and predictive approaches Assess efficacy of treatments and interventions for <u>mild</u> TBI

Implementation Plan: Aim 3

Identifying how to reduce barriers to support people to live their best possible life after TBI

	Short-term	Medium-term	Long-term
3.1	Identify and address gaps in awareness leading to poor outcomes in <u>mild, moderate to severe</u> TBI		
3.2		Quantify variations in access to treatment and care, <u>mild, moderate to severe</u> TBI, building on the data, focus on multiple specific vulnerable populations	Address barriers leading to variation in care, <u>mild, moderate to severe</u> TBI
3.3		Quantify economic impact of <u>mild, moderate to severe</u> TBI	Evaluate cost-effectiveness of treatments and care for <u>mild, moderate to severe</u> TBI



Australian Government

Medical Research Future Fund

Traumatic Brain Injury Mission

Early investments and current grant opportunity

- In 2018-19, \$5.73 million (over 2 years) was awarded 3 projects that focused on clinical research that improves knowledge and its translation into practice in order to enhance personalisation of care after a TBI to achieve the best possible outcomes

- 2020-21 grant opportunity - \$4.3 million (closes 3 March 2021)

➤ Five streams:

- i. Improve care for moderate to severe TBI by designing optimised informatics approaches that gather nationally representative data
- ii. Identify best-practice evidence-based care for moderate to severe TBI, facilitating implementation by clinical guidelines and protocols
- iii. Identify treatments, clinical indicators and interventions to improve the effectiveness of acute care for moderate to severe TBI
- iv. Identify best-practice, evidence-based care for mild TBI across the lifespan research, facilitating implementation by clinical guidelines and protocols
- v. Improve health and wellbeing for people with TBI by identifying and addressing the gaps in awareness that are leading to poor outcomes





Australian Government

Medical Research Future Fund

Traumatic Brain Injury Mission Roadmap and Implementation Plan Consultation

- The Roadmap and Implementation Plan underwent international review in late 2020
- The international review panel comprised experts who provided advice in the context of relevant activities occurring internationally, which can inform the strategic direction of the Mission's Roadmap and Implementation Plan
- The Minister for Health is interested in your comments on the Mission's Roadmap and Implementation Plan, which will guide future MRFF investments





Australian Government

Medical Research Future Fund

Consultation – open discussion

- One hour allocated
- Please type questions in the Q&A box provided on the screen
- Questions and feedback will be collated for the presenters to note or discuss
- All submissions can be made through the Consultation Hub on the Department of Health website (consultations.health.gov.au)
- **Reminder - online submissions close 23rd April 2021**

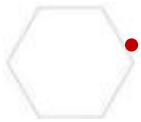




Medical Research Future Fund

Consultation questions

- Are the priority areas for investment identified in the implementation plan the most effective way for delivering on the Mission's goal and aims?
- Are there existing research activities which could be utilised to contribute to the Mission's Roadmap and/or Implementation Plan aims and priority areas for investment? How can these be leveraged?
- Are the 'Evaluation approach and measures' appropriate for assessing and monitoring progress towards the mission's goal and aims?
- Other?





Australian Government

Medical Research Future Fund

More information:

health.gov.au/MRFF
consultations.health.gov.au



Interested in accessing MRFF grants:

Register with **GRANTCONNECT** (www.grants.gov.au)

Thank you

