



Australian Government

Department of Health, Disability and Ageing

NDIS Evidence Advisory Committee Consultation

Family or carers of people who use
smart appliances

Part 2





Australian Government

**Department of Health,
Disability and Ageing**

The Australian Government Department of Health Disability and Ageing wrote this.

We say **DHDA** for short.

When you see the word **we** it means DHDA.



We wrote this in an easy to read way.

We use pictures to explain some ideas.

Bold

Not bold

We have some words in **bold**.

This means the letters are thicker and darker.

These are important words.



This is an Easy Read summary of an online **survey**.

Surveys have questions about your ideas.



We can answer any questions by email.

Email us disabilityevidence@health.gov.au



You can ask for help to read this document.

You can ask

- A friend
- Family members
- A support person.



We recognise Aboriginal and Torres Strait Islander people as the **Traditional Owners** of the land we live on.



They were the **first people** to live on and use the

- Land
- Waters.

Contents

Who is this survey for	5
What to do	8
Question 1	10
Question 2	12
Question 3	16
Question 4	18
Question 5	21
Question 6	24

Who is this survey for



We made a **survey**.



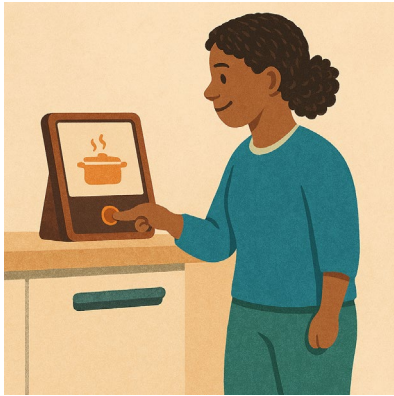
This survey is **only** for family or carers of people with disability who use **smart appliances**



Smart appliances are things you use for

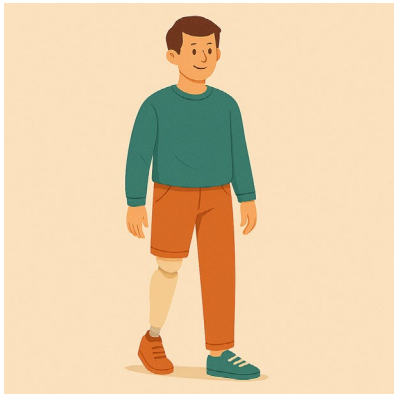
- Cooking
- Cleaning
- Gardening.

You use them around your home.



We have other surveys for people who

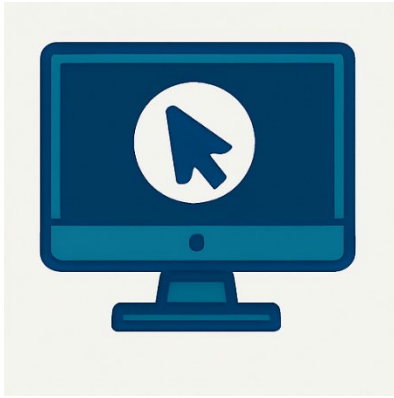
- Use smart appliances



- Do **not** use smart appliances anymore



- Use something else.



You can look at the other surveys on our website.

consultations.health.gov.au/evidence-advisory-committee-eac/september2025

It is in Easy Read.



We have **2 parts** to this survey.



You need to do **part 1** first.

This is **part 2**.



You need to send both parts back to us by email.

You need to send it back before

11.59 at night

Sunday 9 November 2025.

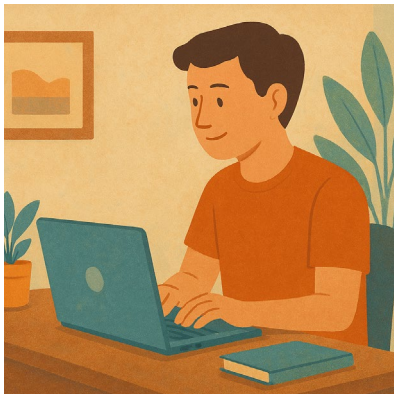
What to do



You need to download both parts of the survey.

You can

- Write your answers



- Type your answers.



You need to send your answers back to us by email.

disabilityevidence@health.gov.au



Each part will have some

- Information
- Questions.



There are no right or wrong answers.

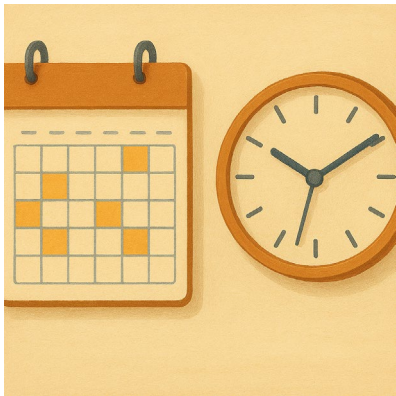
Do your best.



You can choose what questions to answer.

You do **not** have to answer them all.

Question 1



Question 1

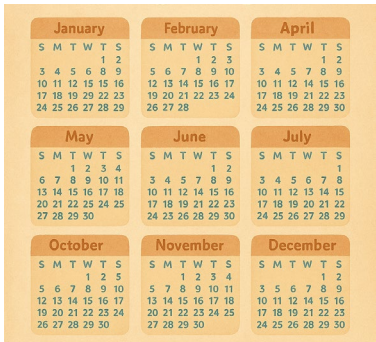
How long has your family member been using smart appliances.

If they do **not** use it anymore how long did they use it.

Please tick 1 box.



- Less than 3 months



- 3 months to a year



- More than 1 year.

Question 2



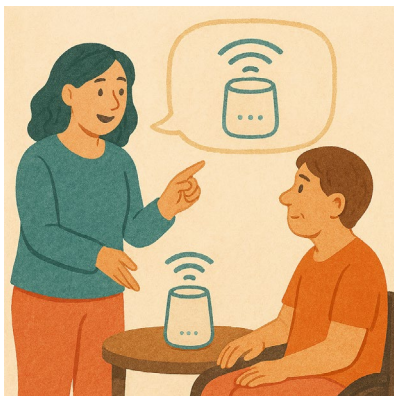
Do you think your family member will keep using smart appliances.

Why.



You could tell us about

- How well it works for them



- If someone said it would be a good idea to use 1



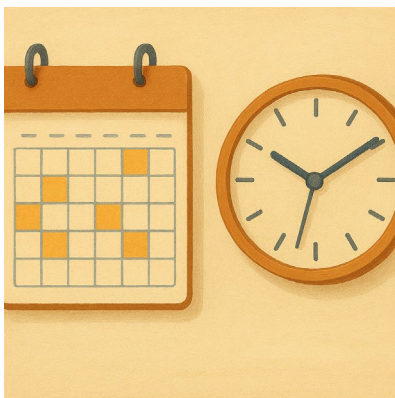
- Other supports they have tried



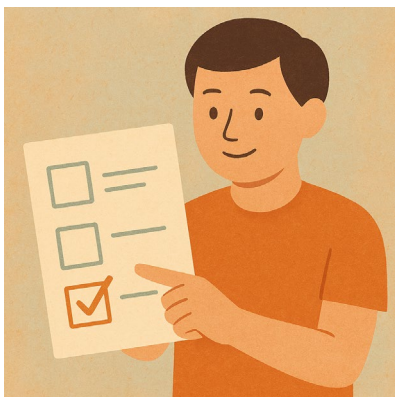
- How much it costs



- If they can get the support



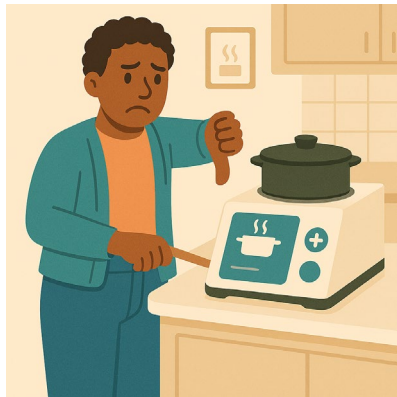
- How long the support is expected to last



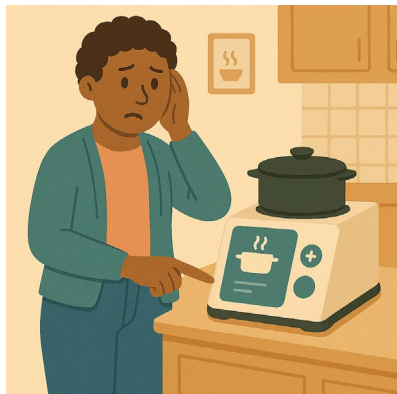
Please tick 1 box.



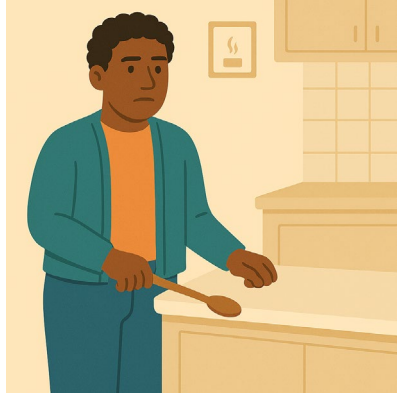
- I think they will keep using smart appliances



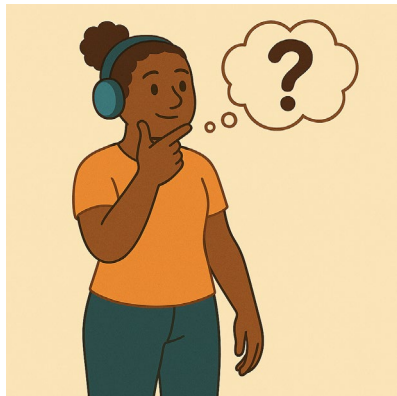
- I do **not** think they will keep using smart appliances



- I am not sure if they will keep using smart appliances



- They stopped using smart appliances.



Please write why in the box.

Question 3



How often do they use smart appliances.



You could tell us about

- How often they use it



- How many hours they use it every **fortnight**

Fortnight means 2 weeks.



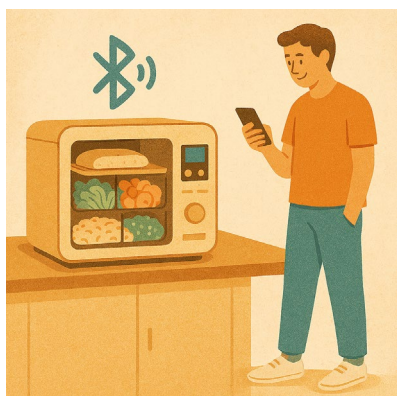
Please write your answer in the box

Question 4

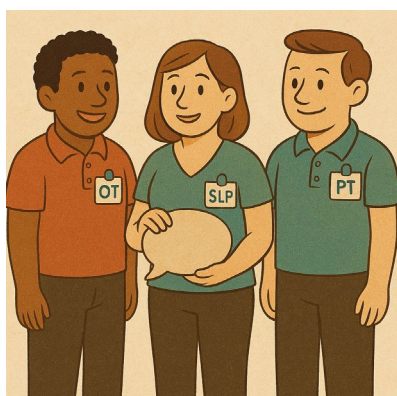


Who helps them use smart appliances.

Please tick all the boxes that fit



- They do it by themselves



- A therapist or **allied health** worker

Allied health support people with their health.

They can be people like **occupational therapists**.

We call them **OT** for short.



- Someone they pay to support them like a
 - Carer
 - Support worker



- Friend
- Family



- I do **not** know



- Someone else.

Please write who in the box

Question 5



Have they had any

- Problems
- Safety issues

Using smart appliances.



They could be things that lasted for a

- Short time



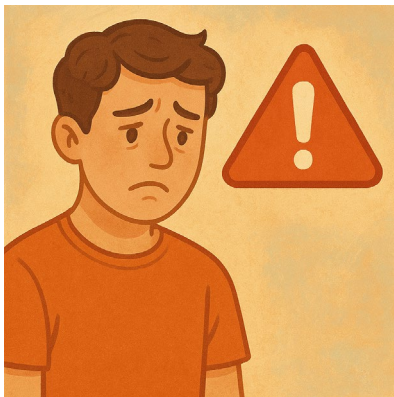
- Long time.



Please tick 1 box.

No

They have **not** had any problems or safety issues.



Yes

They have had problems or safety issues

Please write what they are in the box.



If this question has made you feel

- Upset
- Worried

We have a list of people you can talk to.



consultations.health.gov.au/evidence-advisory-committee-eac/september2025/supporting_documents/help-and-support-easy-readpdf

It is in Easy Read.



If your family member has

- Pain
- Problems that do **not** go away

They need to get medical advice.

Question 6

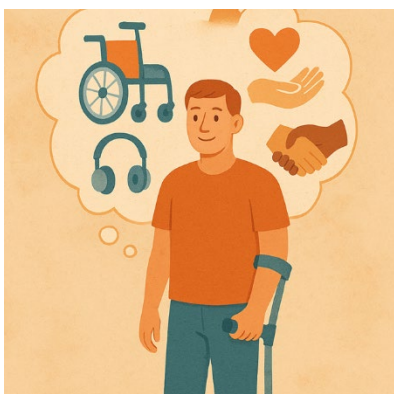


Is there anything else we need to know about smart appliances.



This could be things like

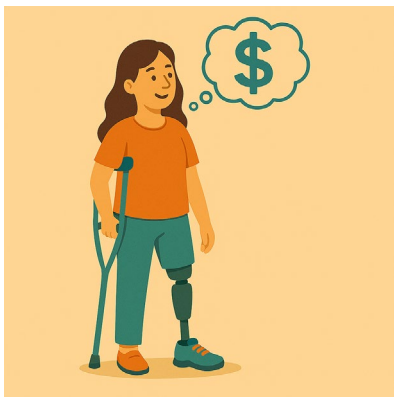
- Being able to get smart appliances



- Other supports they could use



- Being able to see people who could suggest they use smart appliances



- How much it costs to use smart appliances



- How smart appliances fit with other supports that they use

Like care workers.



- Their age



- Their **gender**

People say what gender they are.

They might be

- A man
- A woman
- A different gender
- No gender.



- Their **ethnicity**

Ethnicity is a group of people who shares

- Culture
- Language
- History.



- Who they live with



- Where they live

Like

- In the city
- A remote area.

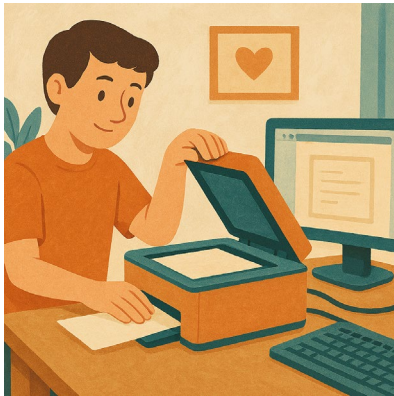


You can share anything you think will help us understand how they use smart appliances.

Please write your answer in the box.



Thank you for doing our survey.



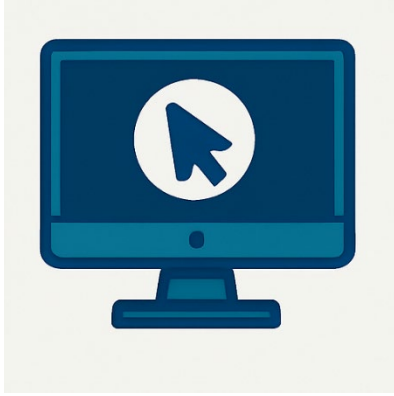
If you printed out the survey you need to

1. Scan it into your computer



2. Send it to us by email.

disabilityevidence@health.gov.au



If you wrote your answers on the computer
you need to

1. Send it to us by email.



You need to send your answers back to us
before

11.59 at night

Sunday 9 November 2025.