



Australian Government

Department of Health, Disability and Ageing

# NDIS Evidence Advisory Committee Consultation

People who use seizure alert dogs

Part 2





**Australian Government**

**Department of Health,  
Disability and Ageing**

The Australian Government Department of Health Disability and Ageing wrote this.

We say **DHDA** for short.

When you see the word **we** it means DHDA.



We wrote this in an easy to read way.

We use pictures to explain some ideas.

**Bold**

We have some words in **bold**.

Not bold

This means the letters are thicker and darker.

These are important words.



This is an Easy Read summary of an online **survey**.

Surveys have questions about your ideas.



We can answer any questions by email.

Email us [disabilityevidence@health.gov.au](mailto:disabilityevidence@health.gov.au)



You can ask for help to read this document.

You can ask

- A friend
- Family members
- A support person.



We recognise Aboriginal and Torres Strait Islander people as the **Traditional Owners** of the land we live on.



They were the **first people** to live on and use the

- Land
- Waters.

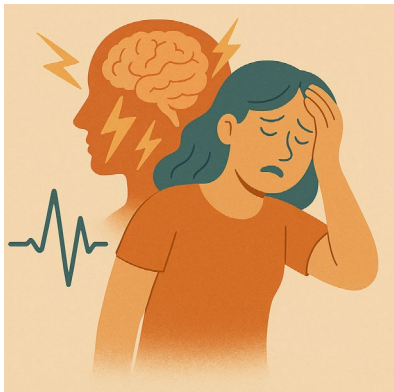
# Contents

Who is this survey for	5
What to do	9
Question 1	11
Question 2	12
Question 3	15
Question 4	18
Question 5	22
Question 6	25

# Who is this survey for

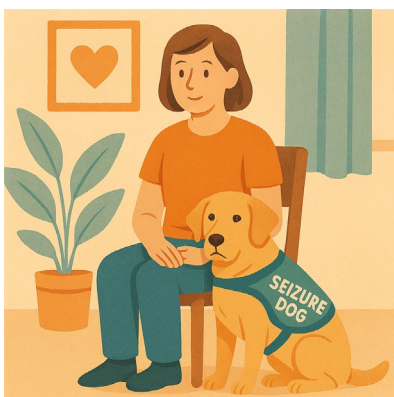


We made a **survey**.



This survey is **only** for people who have

- Epilepsy
- Other disabilities that involve **seizures**.



- Use a seizure alert dog.



Seizures are when the brain has lots of activity happen all of a sudden.

It can make the brain

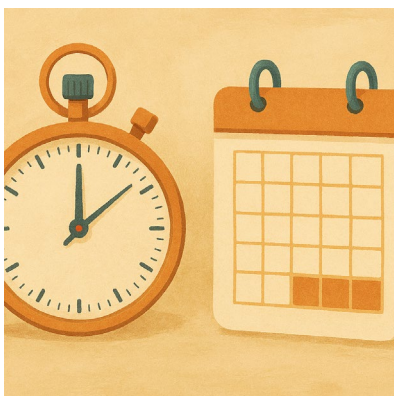
- Get mixed up
- Stop working for a short time.



Seizures can look like

- Someone staring and not talking back
- Shaking
- Falling down.

Seizures look different for everyone.



Seizures can go for a

- Short time
- Long time





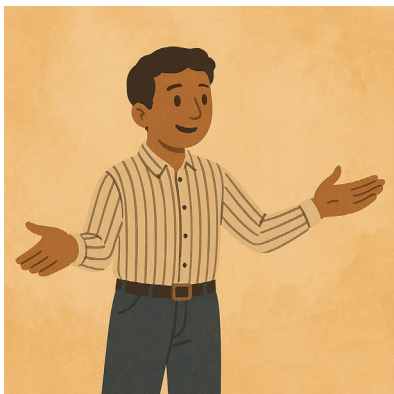
After a seizure most people feel

- Tired
- Confused.



We have other surveys for people who

- Had a seizure alert dog but do **not** use it any more

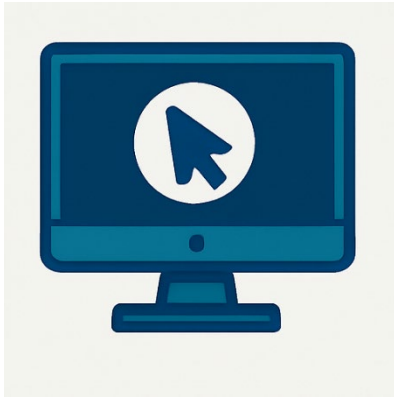


- Use something else



- Family or carers of people who have
  - Epilepsy
  - Other disabilities that involve seizures

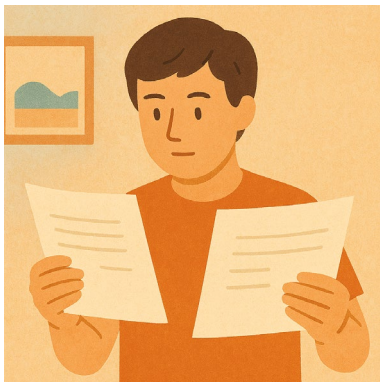
Who use seizure alert dogs.



You can look at the other surveys on our website.

[consultations.health.gov.au/evidence-advisory-committee-eac/september2025](https://consultations.health.gov.au/evidence-advisory-committee-eac/september2025)

It is in Easy Read.



We have **2 parts** to this survey.



You need to do **part 1** first.

This is **part 2**.



You need to send both parts back to us by email.

You need to send it back before

11.59 at night

**Sunday** 9 November 2025.



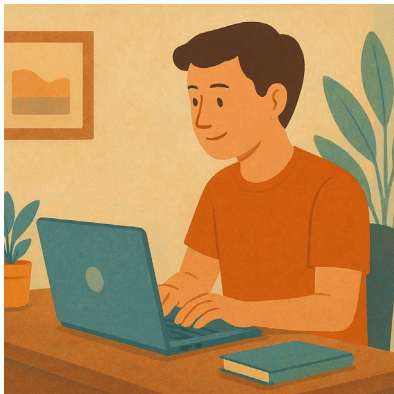
# What to do



You need to download both parts of the survey.

You can

- Write your answers



- Type your answers.



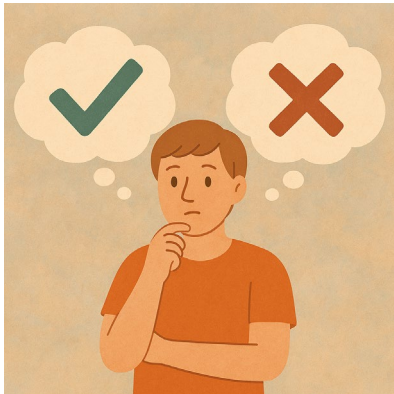
You need to send your answers back to us by email.

[disabilityevidence@health.gov.au](mailto:disabilityevidence@health.gov.au)



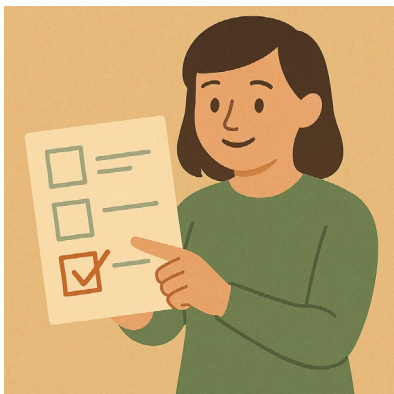
Each part will have some

- Information
- Questions.



There are no right or wrong answers.

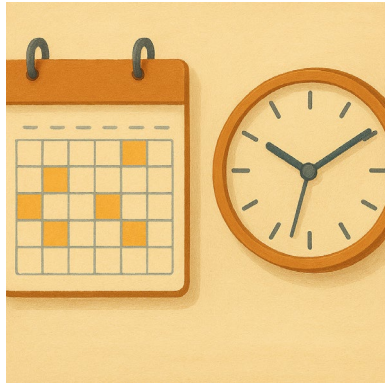
Do your best.



You can choose what questions to answer.

You do **not** have to answer them all.

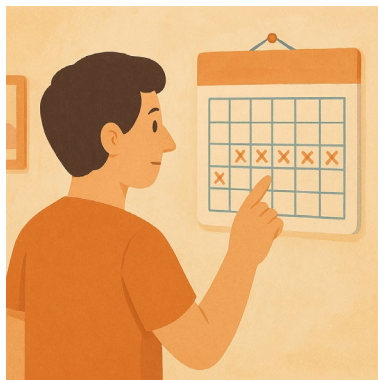
# Question 1



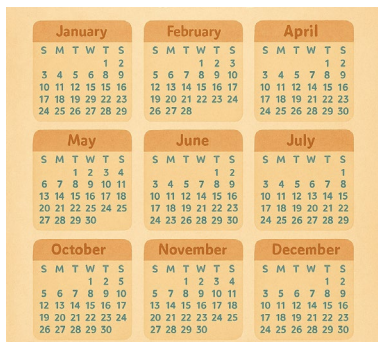
## Question 1

How long have you been using a seizure alert dog.

Please tick 1 box.



- Less than 3 months

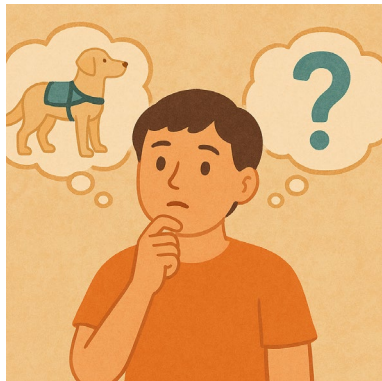


- 3 months to a year



- More than 1 year.

## Question 2



Do you think you will keep using a seizure alert dog.

Why.



You could tell us about

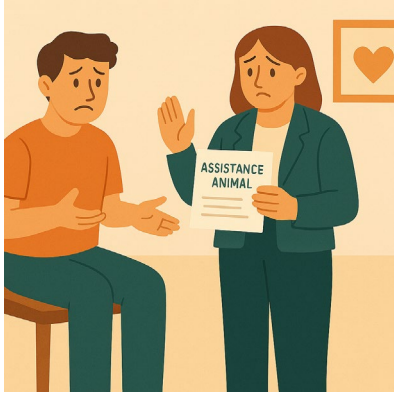
- How well it works for you



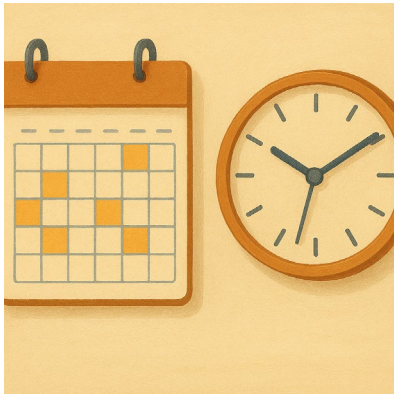
- Other supports you have tried



- How much it costs

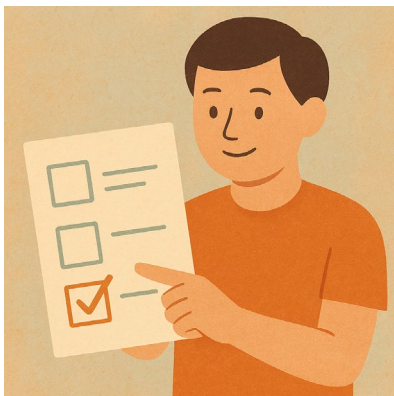


- If you can get the support



- How long before your seizure alert dog **retires**.

Retires means finish working.

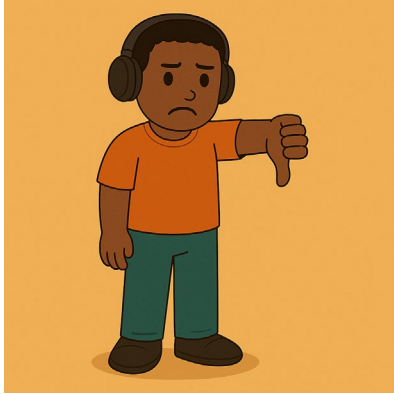


Please tick 1 box.



- I plan to keep using a seizure alert dog

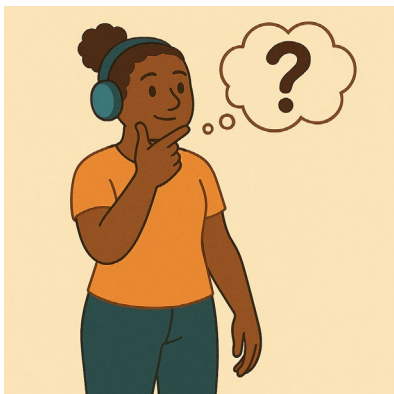




- I do **not** plan to keep using a seizure alert dog

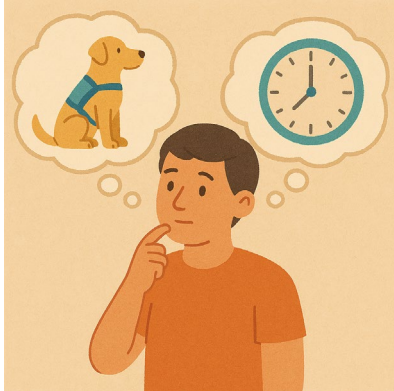


- I am not sure if I will keep using a seizure alert dog.



Please write why in the box.

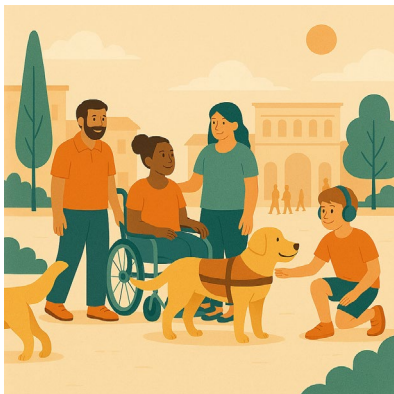
## Question 3



How often do you use your seizure alert dog.



We think people would use their seizure alert dog every day.



You could tell us about

- Where your seizure alert dog supports you

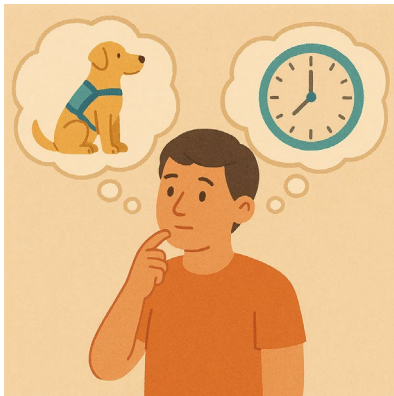
Like

- At home
- In public



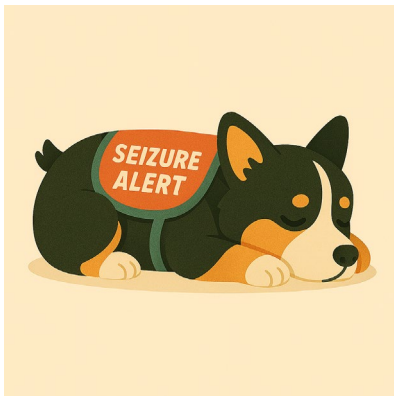
- If your seizure alert dog is always with you

You can tell us about the times they are **not** with you.



- When is your seizure alert dog not working

Like if they

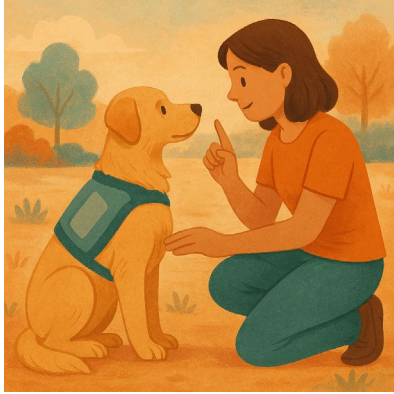


- Have a break
- Sleep.



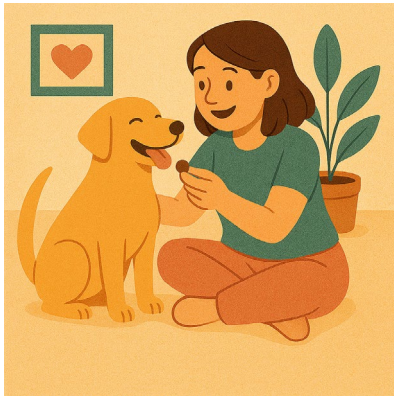
Please write your answer in the box

## Question 4



Who gave you your seizure alert dog.

- A service provider like a trainer



- I did

I bought the seizure alert dog.



Please write your answer in the box.



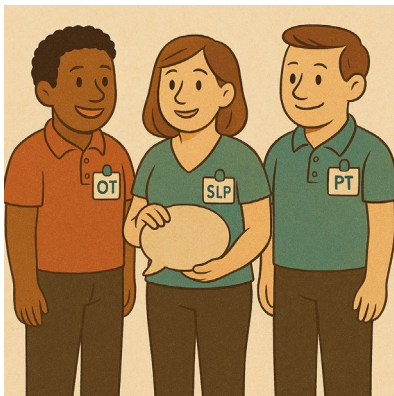


Who helps you use your seizure alert dog.

Please tick all the boxes that fit



- I look after the seizure alert dog myself



- A therapist or **allied health** worker

Allied health support people with their health.

They can be people like **occupational therapists**.

We call them **OT** for short.



- Someone you pay to support you like a
- Carer
- Support worker



- Friend
- Family



- I do **not** know



- Someone else.

Please write who in the box

## Question 5



Have you had any

- Problems
- Safety issues

Using your seizure alert dog.



They could be things that lasted for

- A short time



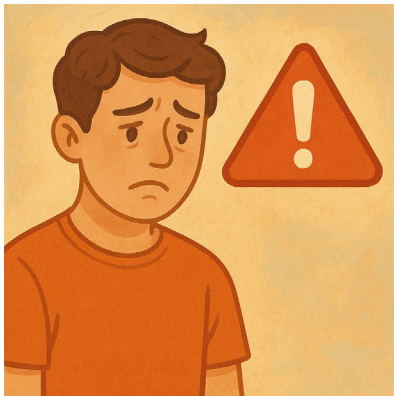
- A long time



Please tick 1 box.

No

I have not had any problems or safety issues.



Yes

I have had problems or safety issues

Please write what they are in the box.





If this question has made you feel

- Upset
- Worried

We have a list of people you can talk to.



[consultations.health.gov.au/evidence-advisory-committee-eac/september2025/supporting\\_documents/help-and-support-easy-readpdf](https://consultations.health.gov.au/evidence-advisory-committee-eac/september2025/supporting_documents/help-and-support-easy-readpdf)

It is in Easy Read.



If you have

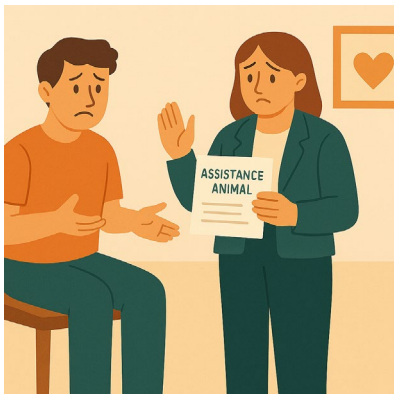
- Pain
- Problems that do **not** go away

You need to get medical advice.

## Question 6



Is there anything else we need to know about seizure alert dogs.



This could be things like

- Being able to get a seizure alert dog



- Other supports you could use

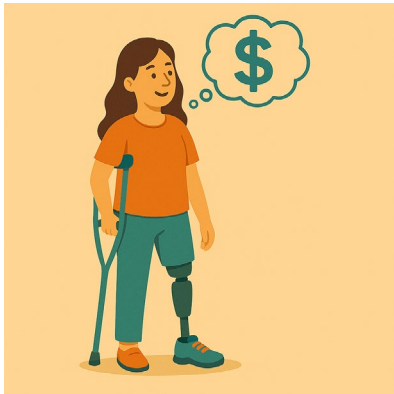


- Using other services like **allied health**

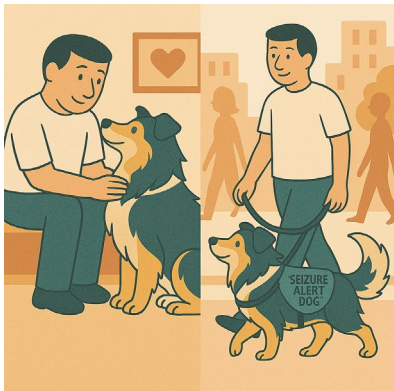
Allied health support people with their health.

They can be people like **occupational therapists**.

We call them **OT** for short.



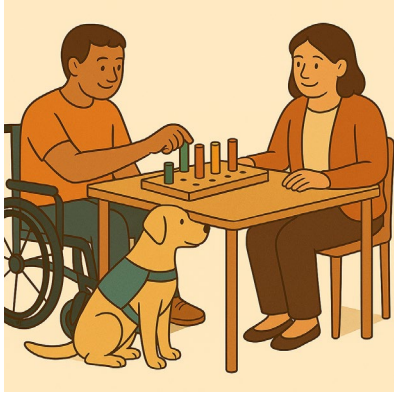
- How much it costs to have a seizure alert dog



- Where you use your seizure alert dog

Like

- In public
- At home.



- How your seizure alert dog fits in with other supports you use



- Your age



- Your **gender**

People say what gender they are.

They might be

- A man
- A woman
- A different gender
- No gender.



- Your **ethnicity**

Ethnicity is a group of people who shares

- Culture
- Language
- History.



- Who you live with



- Where you live

Like

- In the city
- A remote area.



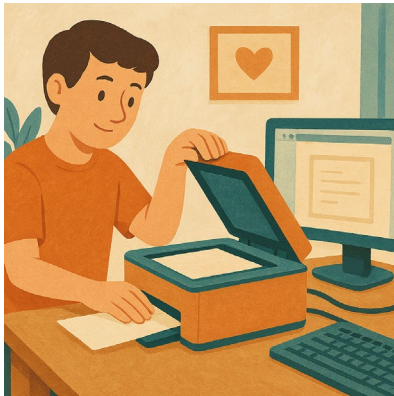


You can share anything you think will help us understand how you use your seizure alert dog.

Please write your answer in the box.



Thank you for doing our survey.



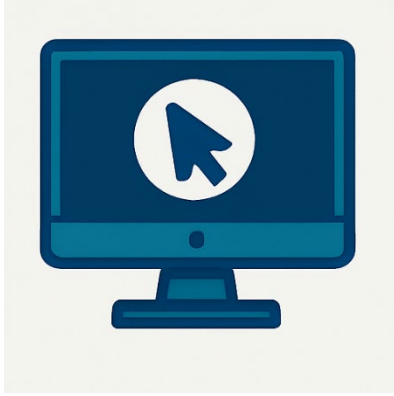
If you printed out the survey you need to

1. Scan it into your computer



2. Send it to us by email.

[disabilityevidence@health.gov.au](mailto:disabilityevidence@health.gov.au)



If you wrote your answers on the computer  
you need to

1. Send it to us by email.



You need to send your answers back to us  
before

11.59 at night

**Sunday** 9 November 2025.

Images in this Easy Read must **not** be used or copied without permission