



Australian Government

Department of Health, Disability and Ageing

NDIS Evidence Advisory Committee Consultation

Family or carers of people who use
seizure alert dogs

Part 2





Australian Government

**Department of Health,
Disability and Ageing**

The Australian Government Department of Health Disability and Ageing wrote this.

We say **DHDA** for short.

When you see the word **we** it means DHDA.



We wrote this in an easy to read way.

We use pictures to explain some ideas.

Bold

We have some words in **bold**.

Not bold

This means the letters are thicker and darker.

These are important words.



This is an Easy Read summary of an online **survey**.

Surveys have questions about your ideas.



We can answer any questions by email.

Email us disabilityevidence@health.gov.au



You can ask for help to read this document.

You can ask

- A friend
- Family members
- A support person.



We recognise Aboriginal and Torres Strait Islander people as the **Traditional Owners** of the land we live on.



They were the **first people** to live on and use the

- Land
- Waters.

Contents

Who is this survey for	5
What to do	9
Question 1	11
Question 2	13
Question 3	17
Question 4	20
Question 5	24
Question 6	27

Who is this survey for



We made a **survey**.



This survey is **only** for family and carers of people who use seizure alert dogs and have

- Epilepsy
- Other disabilities that involve **seizures**.



Seizures are when the brain has lots of activity happen all of a sudden.

It can make the brain

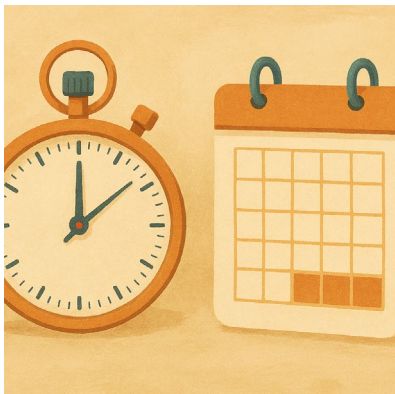
- Get mixed up
- Stop working for a short time.



Seizures can look like

- Someone staring and not talking back
- Shaking
- Falling down.

Seizures look different for everyone.



Seizures can go for a

- Short time
- Long time



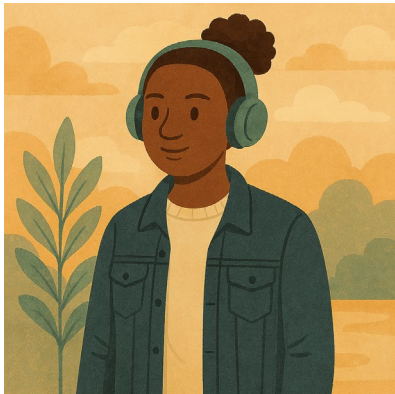
After a seizure most people feel

- Tired
- Confused.

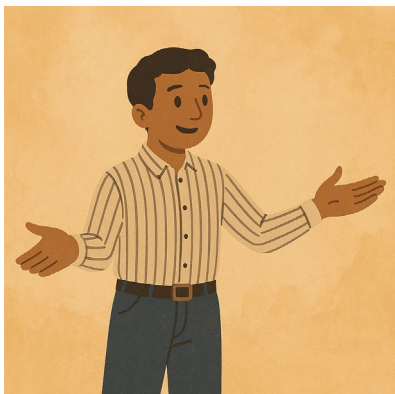


We have other surveys for people who

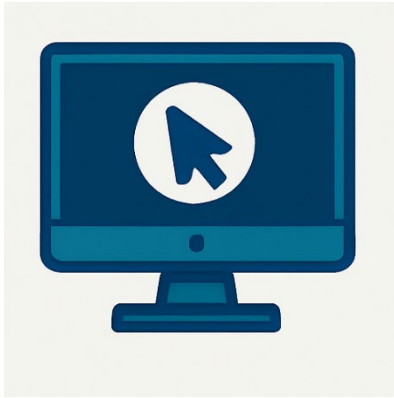
- Use a seizure alert dog



- Had a seizure alert dog but do **not** use it any more



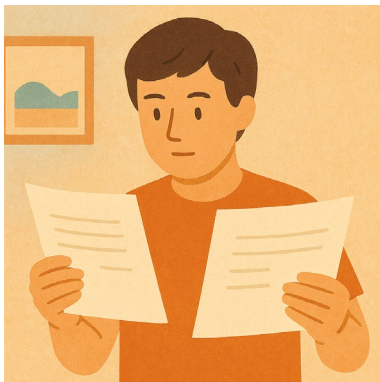
- Use something else



You can look at the other surveys on our website.

consultations.health.gov.au/evidence-advisory-committee-eac/september2025

It is in Easy Read.



We have **2 parts** to this survey.



You need to do **part 1** first.

This is **part 2**.



You need to send both parts back to us by email.

You need to send it back before

11.59 at night

Sunday 9 November 2025.

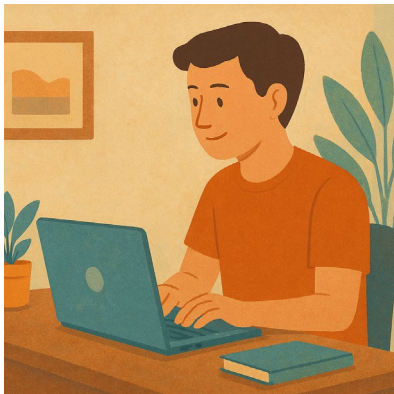
What to do



You need to download both parts of the survey.

You can

- Write your answers



- Type your answers.



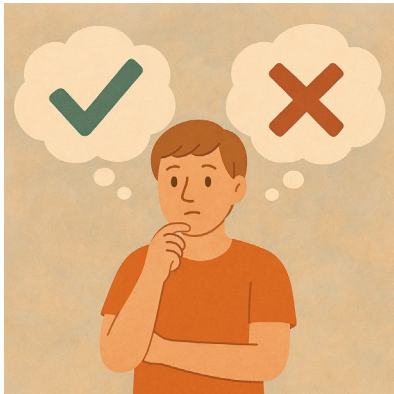
You need to send your answers back to us by email.

disabilityevidence@health.gov.au



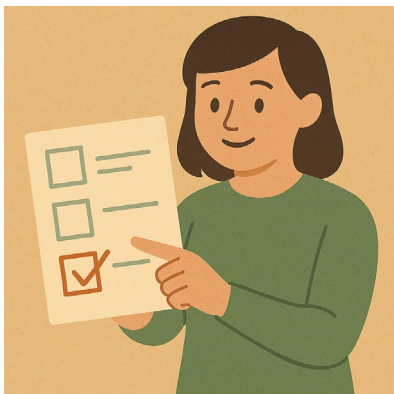
Each part will have some

- Information
- Questions.



There are no right or wrong answers.

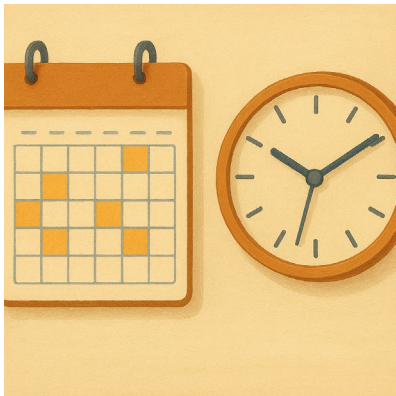
Do your best.



You can choose what questions to answer.

You do **not** have to answer them all.

Question 1



Question 1

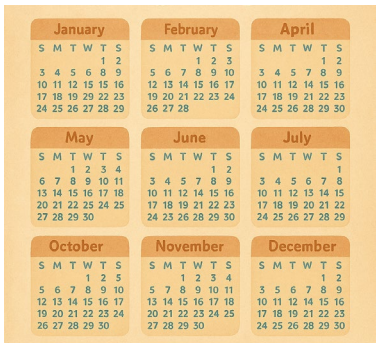
How long has your family member been using a seizure alert dog.

If they do **not** use it anymore how long did they use it.

Please tick 1 box.



- Less than 3 months



- 3 months to a year



- More than 1 year.

Question 2



Do you think your family member will keep using a seizure alert dog.

Why.



You could tell us

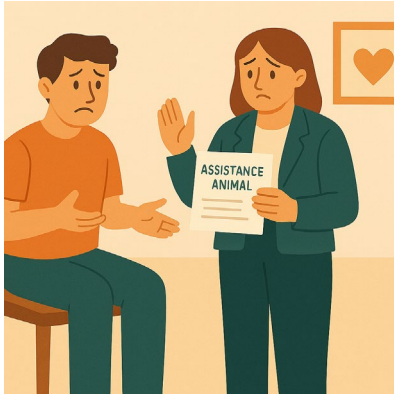
- How well it works for them



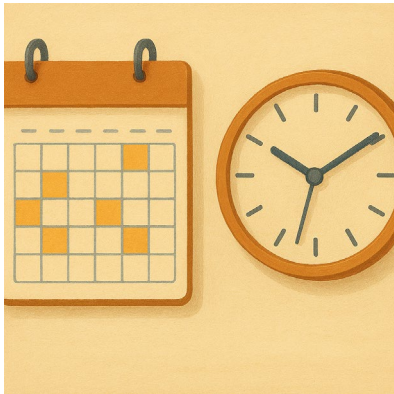
- Other supports they have tried



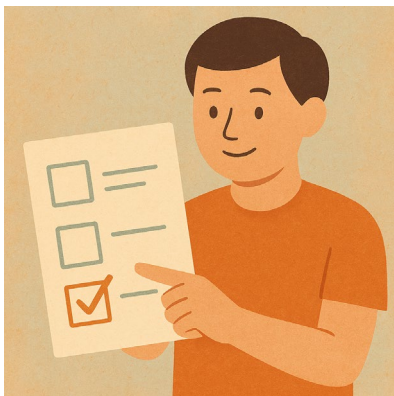
- How much it costs



- If they can get the support



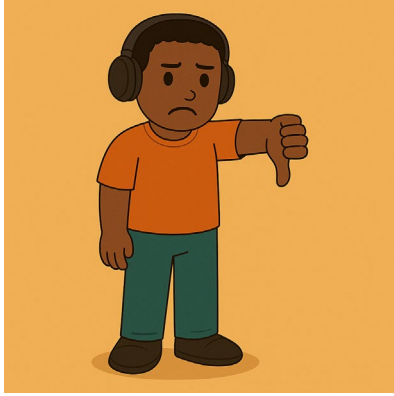
- How long before their seizure alert dog **retires**.
- Retires means finish working.



Please tick 1 box.



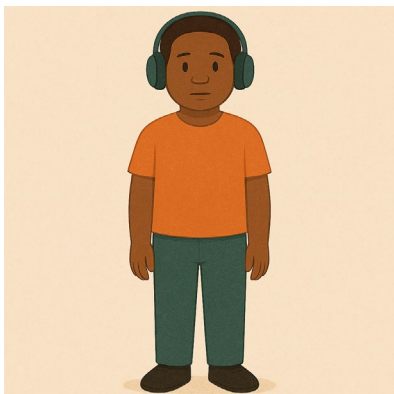
- I think they will keep using a seizure alert dog



- I do **not** think they will keep using a seizure alert dog



- I am **not** sure if they will keep using a seizure alert dog

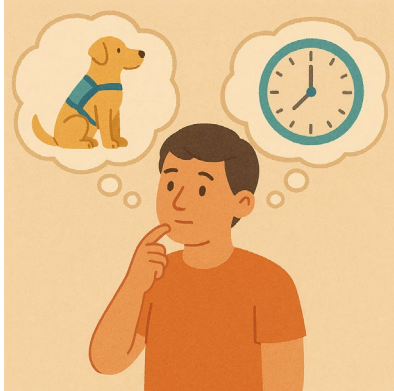


- They stopped using a seizure alert dog.



Please write why in the box.

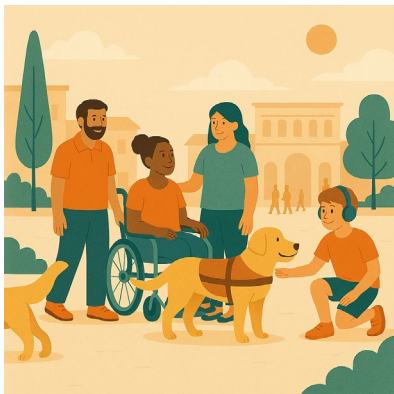
Question 3



How often does your family member use their seizure alert dog.



We think people would use their seizure alert dog every day.



You could tell us about

- Where their seizure alert dog supports them

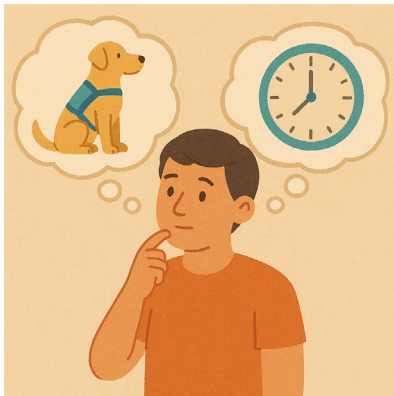
Like

- At home
- In public



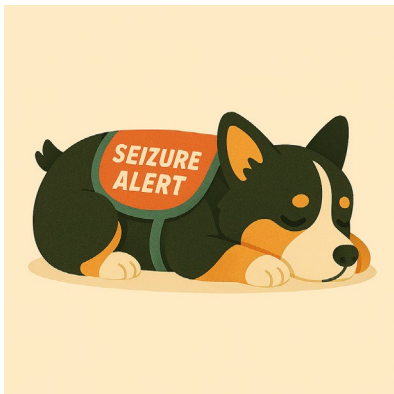
- If their seizure alert dog is always with them

You can tell us about the times they are **not** with them.



- When is their seizure alert dog **not** working

Like if they

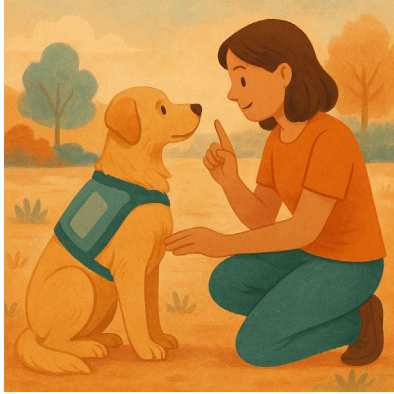


- Have a break
- Sleep.



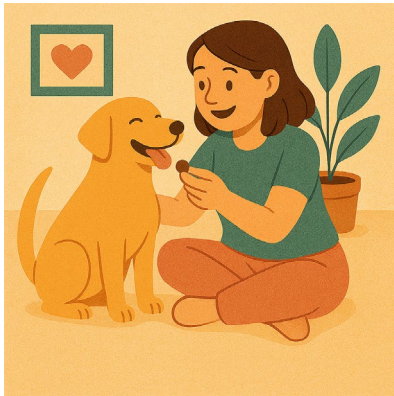
Please write your answer in the box

Question 4



Who gave them their seizure alert dog.

- A service provider like a trainer



- They did

They bought the seizure alert dog.



Please write your answer in the box.

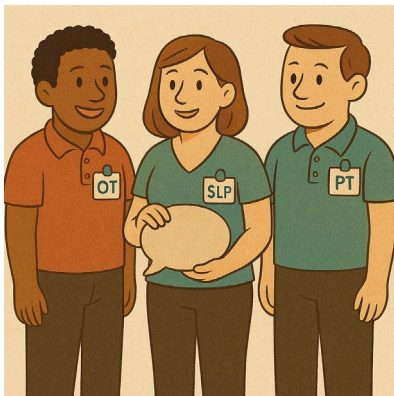


Who helps them use their seizure alert dog.

Please tick all the boxes that fit



- They look after the seizure alert dog themselves



- A therapist or **allied health** worker

Allied health support people with their health.

They can be people like **occupational therapists**.

We call them **OT** for short.

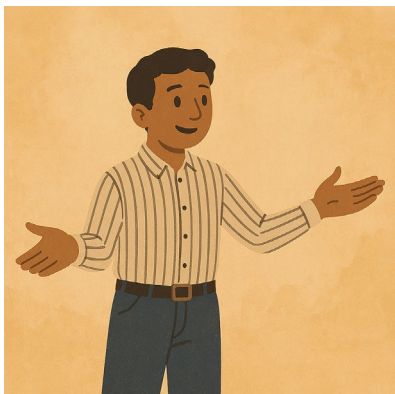


Someone they pay to support them like a

- Carer
- Support worker



- Friend
- Family



- I do **not** know



- Someone else.

Please write who in the box

Question 5



Have they had any

- Problems
- Safety issues

Using their seizure alert dog.



They could be things that lasted for

- A short time



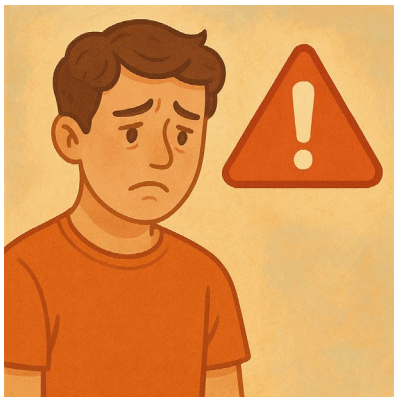
- A long time



Please tick 1 box.

No

They have **not** had any problems or safety issues.



Yes

They have had problems or safety issues

Please write what they are in the box.



If this question has made you feel

- Upset
- Worried

We have a list of people you can talk to.



consultations.health.gov.au/evidence-advisory-committee-eac/september2025/supporting_documents/help-and-support-easy-readpdf

It is in Easy Read.



If your family member has

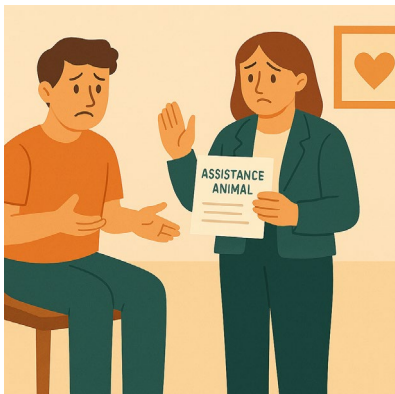
- Pain
- Problems that do **not** go away

They need to get medical advice.

Question 6



Is there anything else we need to know about seizure alert dogs.



This could be things like

- Being able to get a seizure alert dog



- Other supports you could use

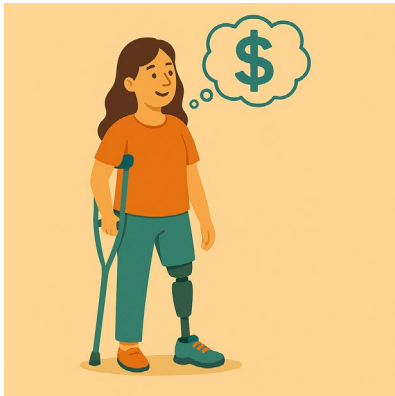


- Using other services like **allied health**

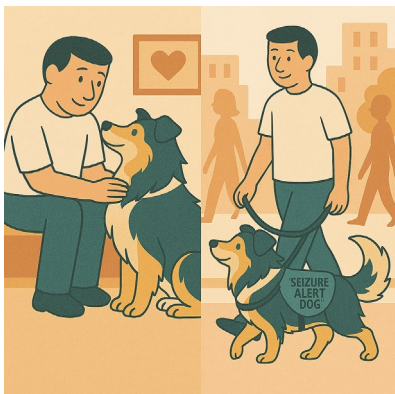
Allied health support people with their health.

They can be people like **occupational therapists**.

We call them **OT** for short.



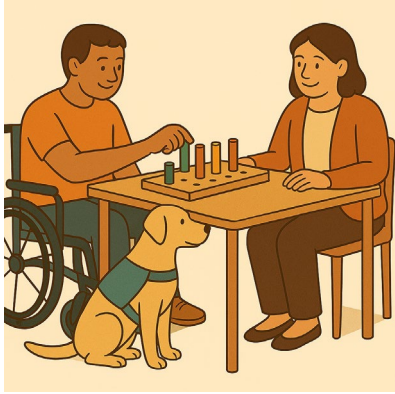
- How much it costs to have a seizure alert dog



- Where you use your seizure alert dog

Like

- In public
- At home.



- How your seizure alert dog fits in with other supports you use



- Their age



- Their **gender**

People say what gender they are.

They might be

- A man
- A woman
- A different gender
- No gender.



- Their **ethnicity**

Ethnicity is a group of people who shares

- Culture
- Language
- History.



- Who they live with



- Where they live

Like

- In the city
- A remote area.

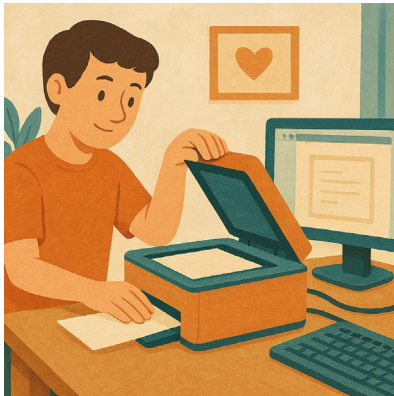


You can share anything you think will help us understand how they use their seizure alert dog.

Please write your answer in the box.



Thank you for doing our survey.



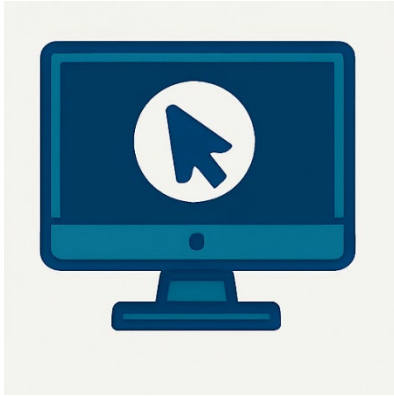
If you printed out the survey you need to

1. Scan it into your computer



2. Send it to us by email.

disabilityevidence@health.gov.au



If you wrote your answers on the computer
you need to

1. Send it to us by email.



You need to send your answers back to us
before

11.59 at night

Sunday 9 November 2025.