



Australian Government

Department of Health, Disability and Ageing

NDIS Evidence Advisory Committee Consultation

People who use something different to
seizure alert dogs

Part 1





Australian Government

**Department of Health,
Disability and Ageing**

The Australian Government Department of Health Disability and Ageing wrote this.

We say **DHDA** for short.

When you see the word **we** it means DHDA.



We wrote this in an easy to read way.

We use pictures to explain some ideas.

Bold

Not bold

We have some words in **bold**.

This means the letters are thicker and darker.

These are important words.



This is an Easy Read summary of an online **survey**.

Surveys have questions about your ideas.



We can answer any questions by email.

Email us disabilityevidence@health.gov.au



You can ask for help to read this document.

You can ask

- A friend
- Family members
- A support person.



We recognise Aboriginal and Torres Strait Islander people as the **Traditional Owners** of the land we live on.



They were the **first people** to live on and use the

- Land
- Waters.

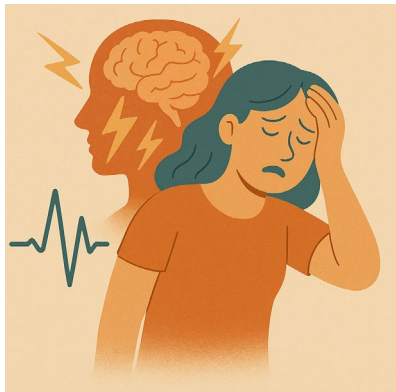
Contents

Who is this survey for	5
What to do	9
About your disability	11
Question 1 support	17
Question 2 disability group	24
Question 3 outcomes	27
Question 4 compare with other supports	32

Who is this survey for

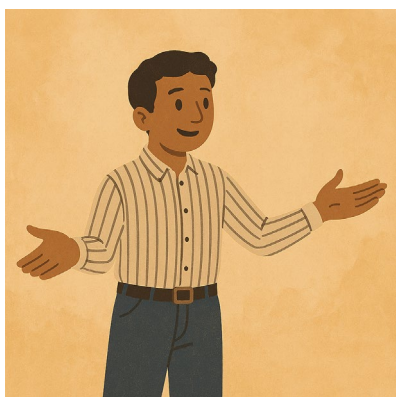


We made a **survey**.



This survey is **only** for people who have

- Epilepsy
- Other disabilities that involve **seizures**.



- Use something else.



Seizures are when the brain has lots of activity happen all of a sudden.

It can make the brain

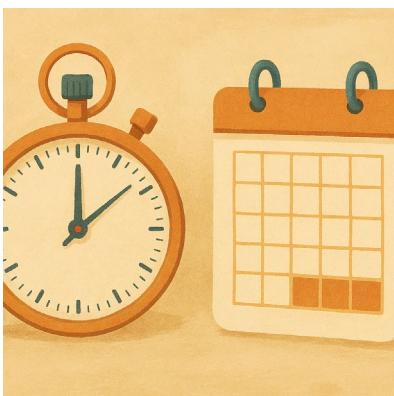
- Get mixed up
- Stop working for a short time.



Seizures can look like

- Someone staring and not talking back
- Shaking
- Falling down.

Seizures look different for everyone.



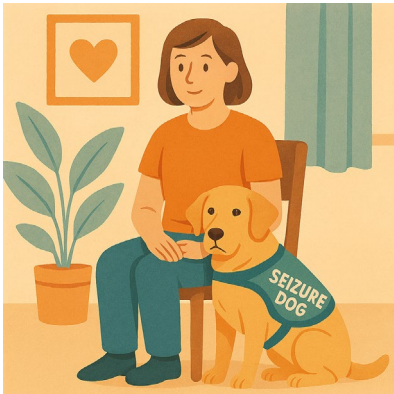
Seizures can go for a

- Short time
- Long time



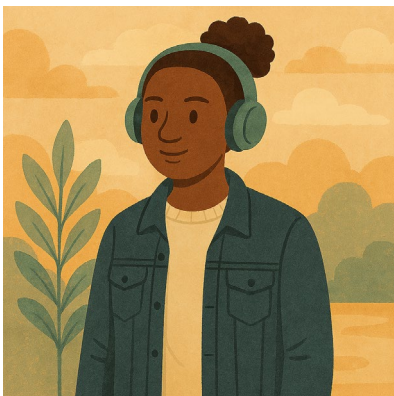
After a seizure most people feel

- Tired
- Confused.



We have other surveys for people who

- Use a seizure alert dog

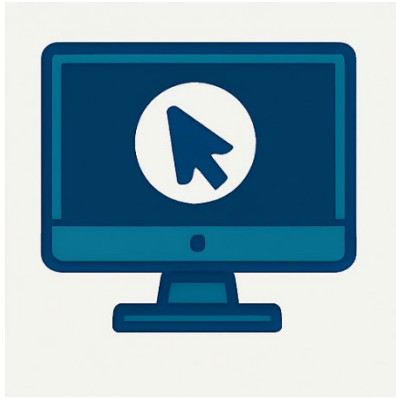


- Had a seizure alert dog but do **not** use it any more



- Family or carers of people who have
 - Epilepsy
 - Other disabilities that involve seizures

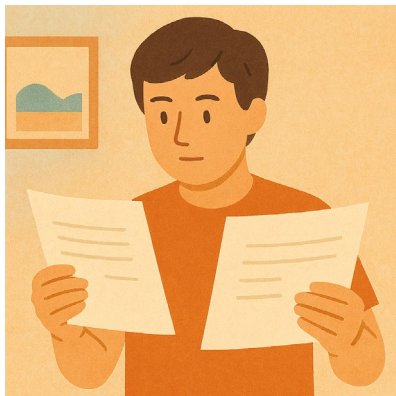
Who use seizure alert dogs.



You can look at the other surveys on our website.

consultations.health.gov.au/evidence-advisory-committee-eac/september2025

It is in Easy Read.



We have **2 parts** to this survey.



You need to do **part 1** first.



You need to send both parts back to us by email.

You need to send it back before

11.59 at night

Sunday 9 November 2025.

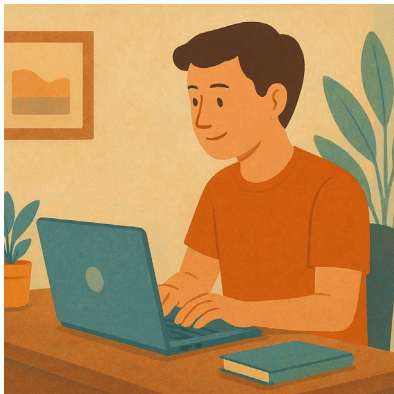
What to do



You need to download both parts of the survey.

You can

- Write your answers



- Type your answers.



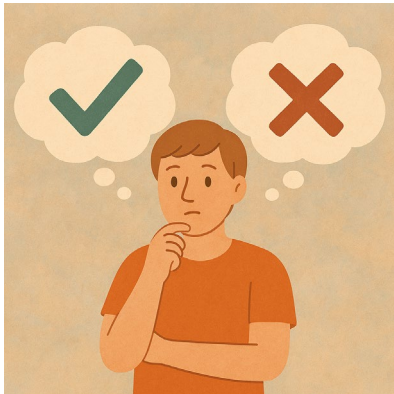
You need to send your answers back to us by email.

disabilityevidence@health.gov.au



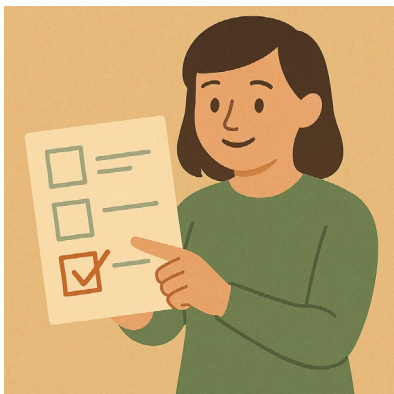
Each part will have some

- Information
- Questions.



There are no right or wrong answers.

Do your best.



You can choose what questions to answer.

You do **not** have to answer them all.

About your disability



What is your disability

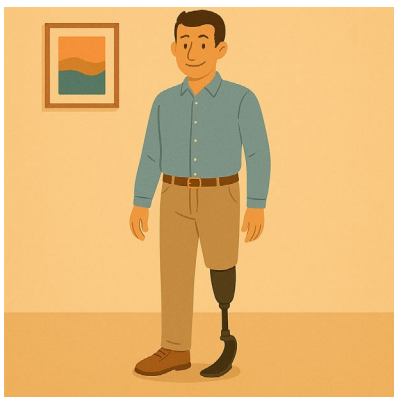
You can pick as many you have



- Acquired Brain Injury

This is anything that damages your brain after you were born like

- Stroke
- Injury to your head
- Diseases.



- Amputations

This is when you have an operation to remove part of your body like your leg.

They only do this if they have to.



- Arthritis

This is pain or swelling in your joints like in your hands.

It can happen in

- 1 part of your body
- Many parts of your body.



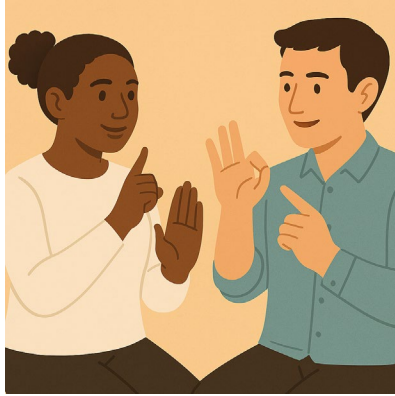
- Autism



- Cerebral palsy

This is a physical disability that can change how you

- Move
- Stand
- Sit.



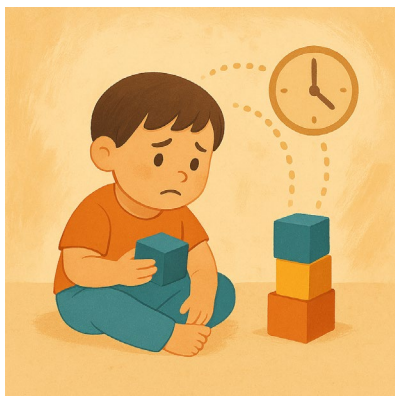
- Deaf or hard of hearing



- Dementia

This is when you have trouble

- Thinking
- Remembering
- Doing things for yourself.

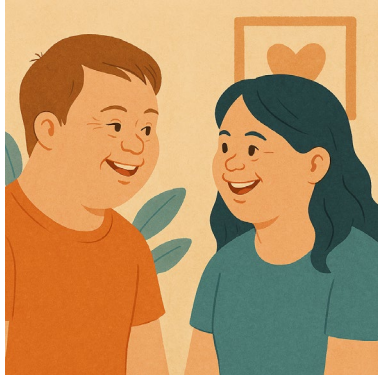


- Developmental Delay

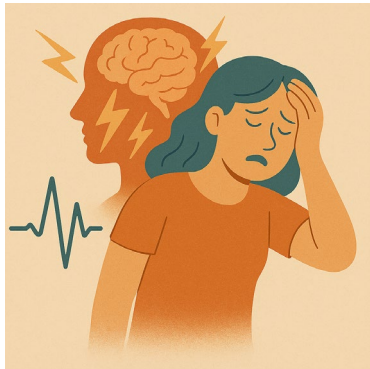
This is when someone learns slower than other people their age.

They might need extra help with

- Talking
- Moving
- Their emotions.

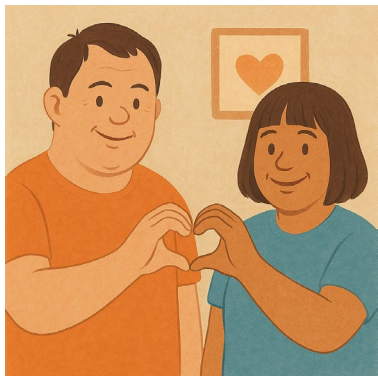


- Down Syndrome

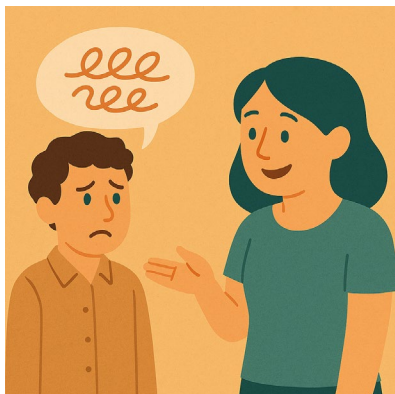


- Epilepsy

This is when someone has seizures.



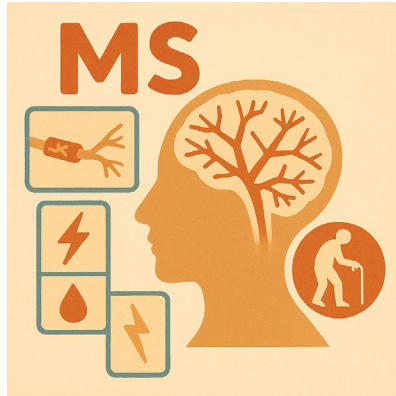
Intellectual disability



- Language disorders

This is when someone has a hard time understanding or using language that is

- Spoken
- Written down
- Signed.



- Multiple sclerosis

This affects your

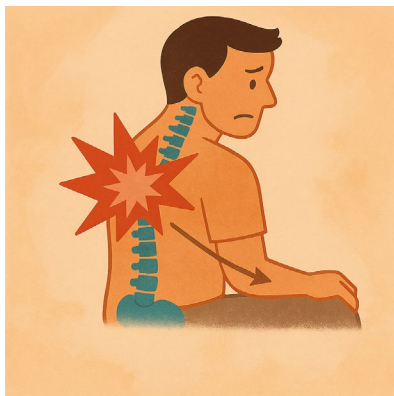
- Brain
- Spine
- Nerves

It is called **MS** for short.



- Psychosocial disability

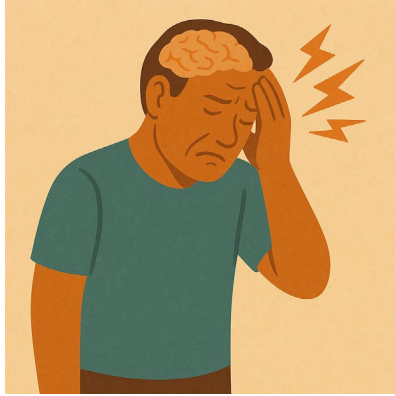
This is a disability because of your mental health.



- Spinal cord injury

This is when you have damaged your spine.

This can change what you can do for yourself.



- Stroke

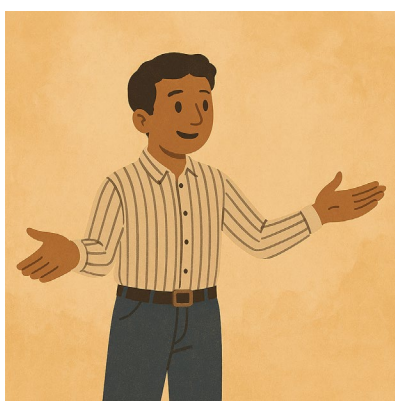
This is when the blood in your brain

- Is stopped for a time
- Can **not** get to where it needs to.

This can cause damage to your brain.



- Blind or have low vision



- Anything else

Please write in the box

Question 1 support



We want you to think about **seizure alert dogs** for

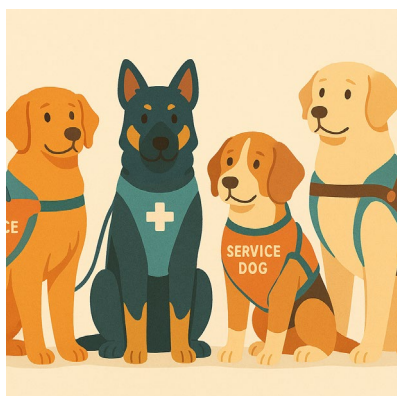
- Epilepsy
- Other disabilities that involve seizures.



The person who has the dog is called the **handler**.

Sometimes this is

- The person who has seizures
- Someone else like a parent.

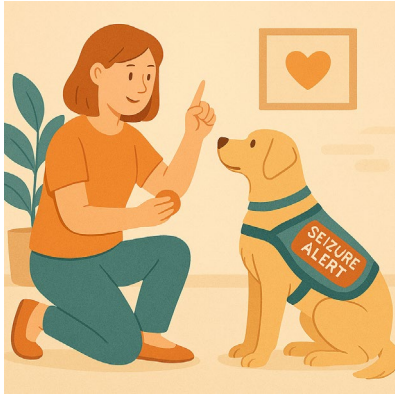


A seizure alert dog is **trained** to respond to seizures.

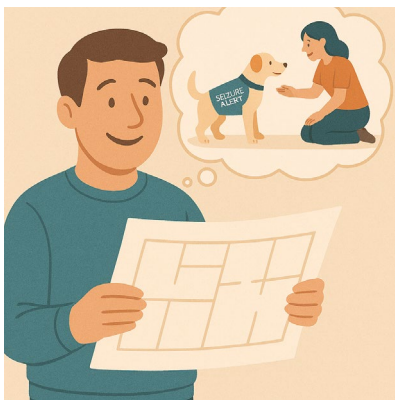
Trained means they have learned something.

They **aim** to help people who have seizures.

Aims are things you want to do.

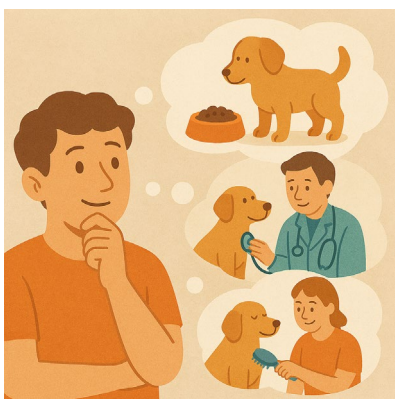


They are trained first by a special dog trainer.



The handler follows the plan

- To keep up training
- Do what else is needed for the seizure alert dog.



The handler also looks after the seizure alert dog.

Like

- Buying it food
- Taking it to the vet
- Looking after its fur.



Seizure alert dogs respond to seizure by

- Alerting people

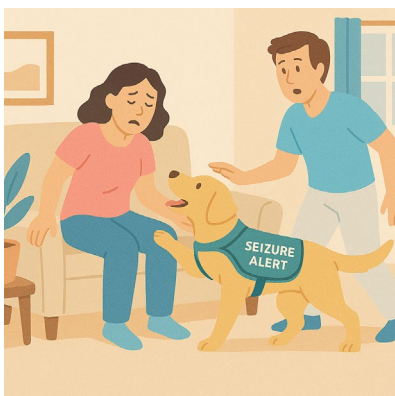


- Protecting the handler from getting hurt.



They do this by

- Barking



- Getting someone else



- Pressing the handlers **seizure response device**

This is something the person who has seizures wears.

It helps tell other people they are having a seizure and need help.



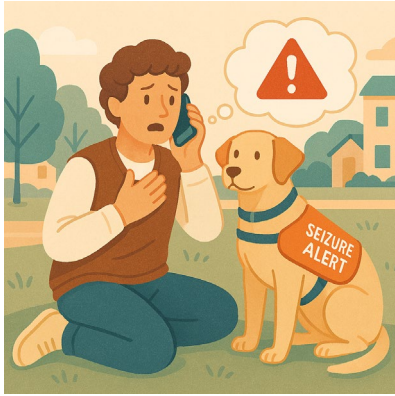
- They might use their body to stop the handler getting hurt.

They can block dangerous areas.



There are also seizure **predicting** dogs.

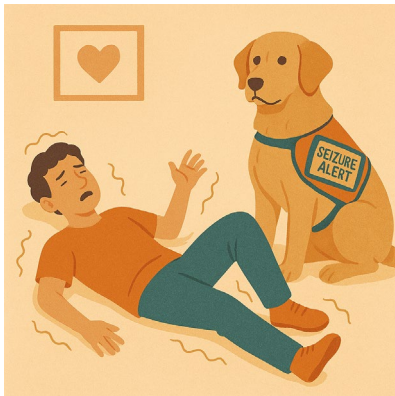
Predicting means saying if something is going to happen in the future.



Seizure predicting dogs alert the handler before they have a seizure.

This can help the handler

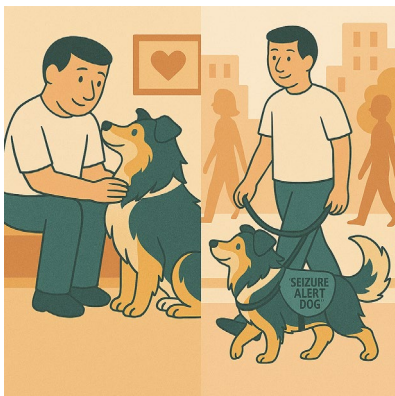
- Move to a safe space
- Call for help.



Both types of seizure alert dogs are trained to

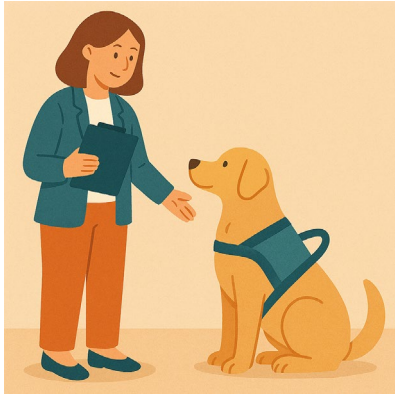
- Comfort
- Support

The person after the seizure has stopped.



People use their seizure alert dogs

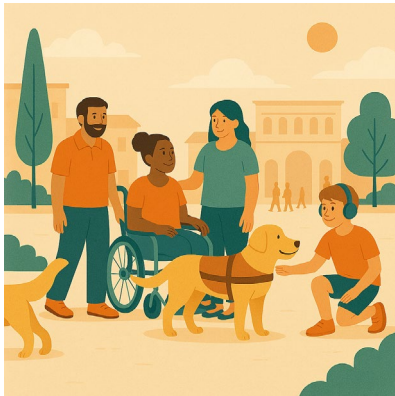
- At home
- In public.



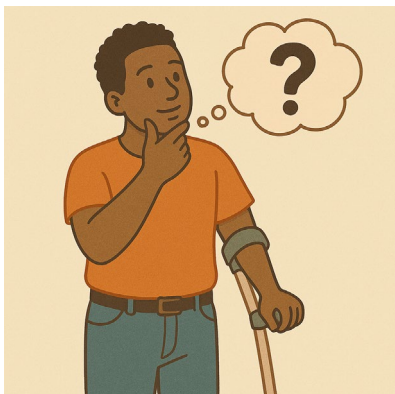
Seizure alert dogs need to

- Have the right **accreditation**

Accreditation means someone has come to check that the rules have been followed.



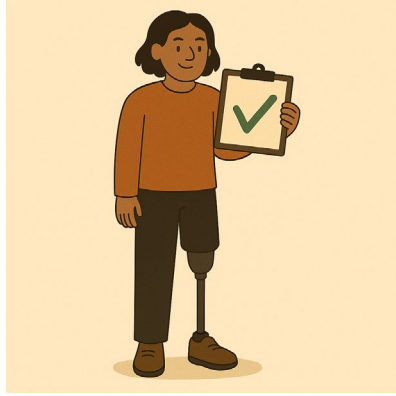
- Be safe and healthy in the community



Question 1

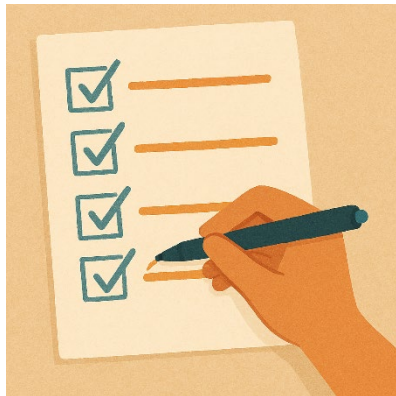
Do you think we have said everything about

- What seizure alert dogs are
- How they are used.



Please tick only 1 box.

Yes



No

I want to change something.

Please write what you want to change in the box.

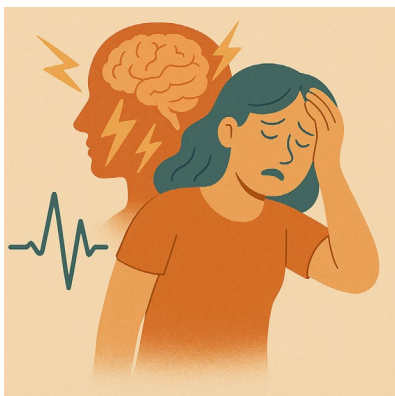
You can

- Add something
- Take away something

Question 2 disability group



We want to think about all the different groups of people who might use seizure alert dogs.



So far we think they are

- People with epilepsy
- People with other disabilities that involve seizures.



We think they could be

- Children

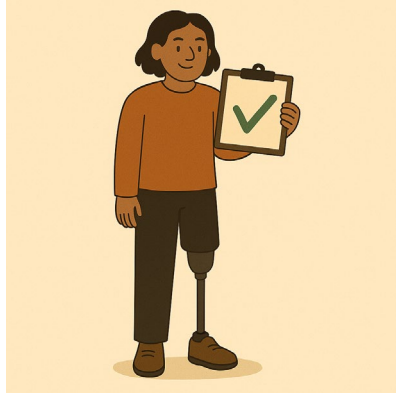


- Adults.



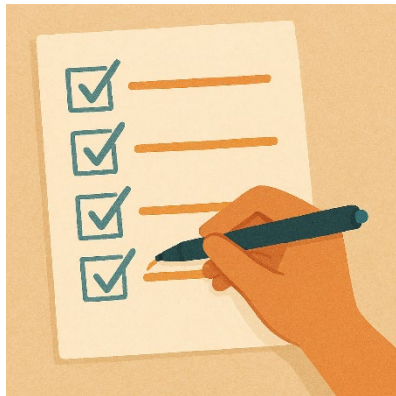
Question 2

Do you think we have said all the groups of people who might use seizure alert dogs.



Please tick only 1 box.

Yes



No

I want to change something.

Please write what you want to change in the box.

You can

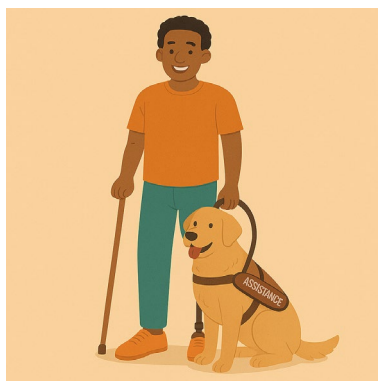
- Add something
- Take something away.

Question 3 outcomes



Supports are used to get good **outcomes**.

Outcomes are the things we see when our plans are working.



Outcomes can

- Make peoples lives better



- Keep people safer.



We think that seizure alert dogs aim to help with



- Stopping people from getting hurt with seizures they do **not** expect



- Being **independent**

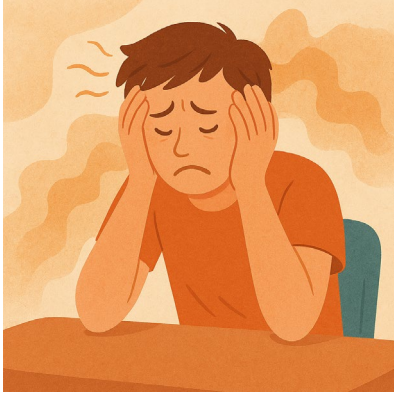
Independent means doing things on your own.



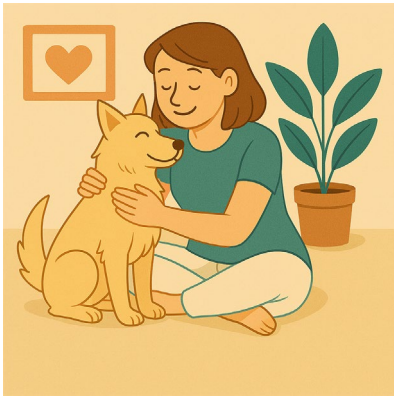
- Good **wellbeing**

Wellbeing means that you are

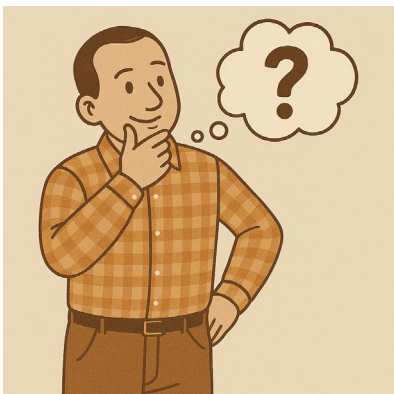
- Happy
- Healthy.



- Stress



- Emotional support.



Question 3

Do you think we have said the most important outcomes for this support.



Please tick only 1 box.

Yes

You can write extra things if you want.

You can put the outcomes you think are the most important.



No

I want to change the list.

Please write what you want to change in the box.

You can

- Add something
- Take something away.

Question 4 compare with other supports



We need to **compare** how well seizure alert dogs work for

- People with epilepsy
- People with other disabilities that involve seizures.



Compare means to look at 2 or more things.

You might look at what

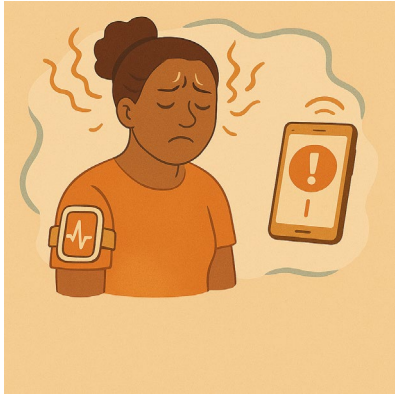
- Is different
- Is the same
- Works best.

This will help us say if 1 support is best.



Other supports we could compare seizure alert dogs with are

- A full time support worker



- **Assistive technology**

Like

- Seizure monitor alert device
- Other things to help



Assistive technology can be things to help you

- Speak
- Move
- See
- Hear.



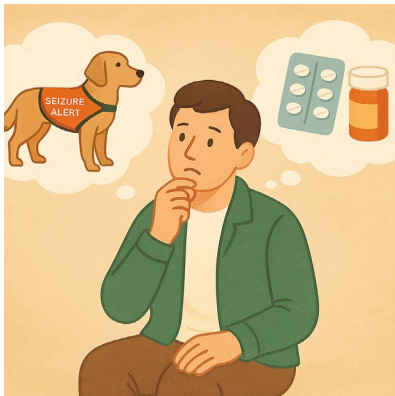
- What you use to manage your seizures

Like medicine.



We think these supports will aim to help people with the same **outcomes**.

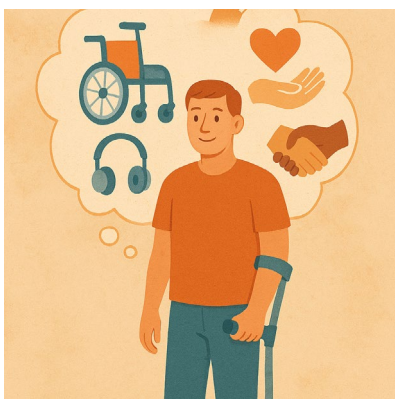
Outcomes are the things we see when our plans are working.



A seizure dog is used with other supports.

It does **not replace** something else.

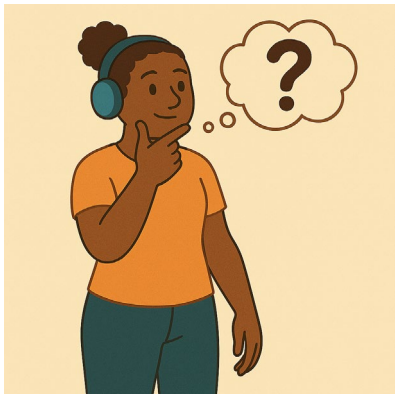
Replace means change 1 thing for another.



Have you tried different supports.

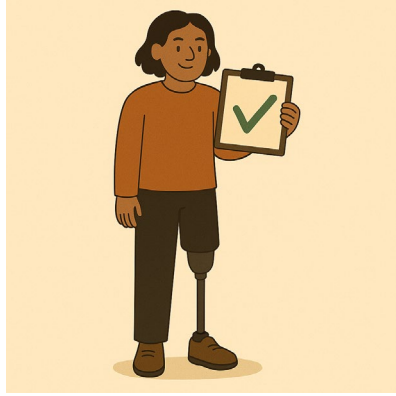


What supports would you use if you could **not** use seizure alert dog.



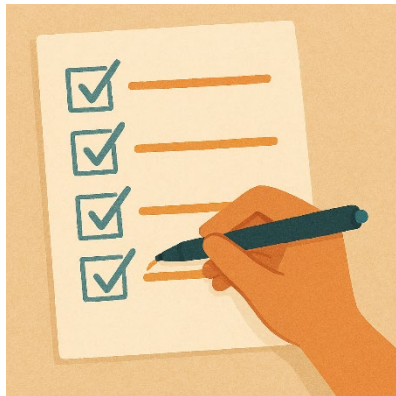
Question 4

Are these the best supports to compare to seizure alert dogs.



Please tick only 1 box.

Yes



No

I want to change something.

Please write what you want to change in the box.

You can

- Add something
- Take something away.



Thank you for doing **part 1**.

Please do **part 2** next.



You can take a break if you need it.

Images in this Easy Read must **not** be used or copied without permission