



Australian Government

Department of Health, Disability and Ageing

# NDIS Evidence Advisory Committee Consultation

People who something different to  
psychiatric assistance dogs

Part 2





**Australian Government**

**Department of Health,  
Disability and Ageing**

The Australian Government Department of Health Disability and Ageing wrote this.

We say **DHDA** for short.

When you see the word **we** it means DHDA.



We wrote this in an easy to read way.

We use pictures to explain some ideas.

**Bold**

Not bold

We have some words in **bold**.

This means the letters are thicker and darker.

These are important words.



This is an Easy Read summary of an online **survey**.

Surveys have questions about your ideas.



We can answer any questions by email.

Email us [disabilityevidence@health.gov.au](mailto:disabilityevidence@health.gov.au)



You can ask for help to read this document.

You can ask

- A friend
- Family members
- A support person.



We recognise Aboriginal and Torres Strait Islander people as the **Traditional Owners** of the land we live on.



They were the **first people** to live on and use the

- Land
- Waters.

# Contents

Who is this survey for	5
What to do	8
Question 1	10
Question 2	11

# Who is this survey for



We made a **survey**.



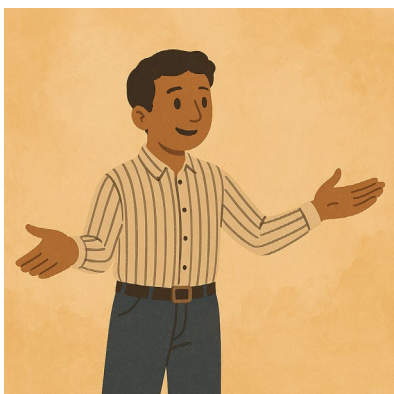
This survey is **only** for people who

- Have a **psychosocial disability**

This is when some people have a disability because of their mental health.

This includes people who have **post traumatic stress disorder**.

We call it **PTSD** for short.



- Use something else

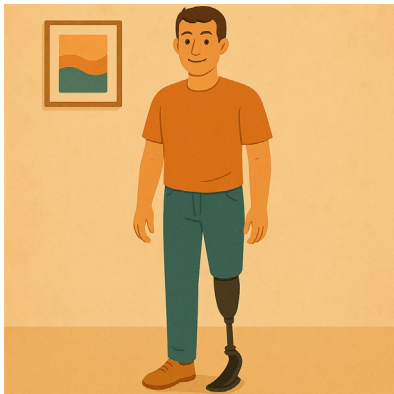


We have other surveys for people who

- Use **psychiatric** assistance dogs

Psychiatric means

- Mental health
- How we look after mental health.



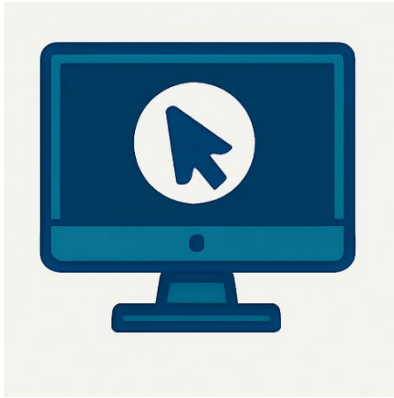
- Had a psychiatric assistance dog but do **not** use it any more



- Family or carers of people who have a psychosocial disability

Who use a psychiatric assistance dog.

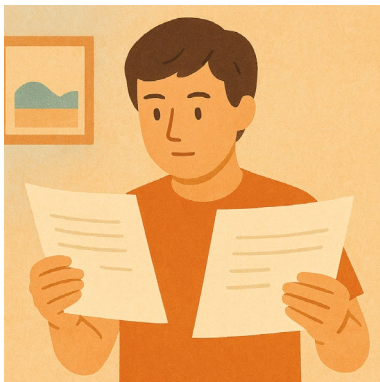




You can look at the other surveys on our website.

[consultations.health.gov.au/evidence-advisory-committee-eac/september2025](https://consultations.health.gov.au/evidence-advisory-committee-eac/september2025)

It is in Easy Read.



We have **2 parts** to this survey.



You need to do **part 1** first.

This is **part 2**.



You need to send both parts back to us by email.

You need to send it back before

11.59 at night

**Sunday** 9 November 2025.

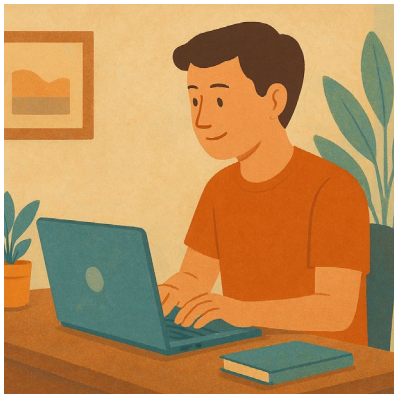
# What to do



You need to download both parts of the survey.

You can

- Write your answers



- Type your answers.



You need to send your answers back to us by email.

[disabilityevidence@health.gov.au](mailto:disabilityevidence@health.gov.au)





Each part will have some

- Information
- Questions.



There are no right or wrong answers.

Do your best.



You can choose what questions to answer.

You do **not** have to answer them all.

# Question 1



## Question 1

What do you use instead of a psychiatric assistance dog.

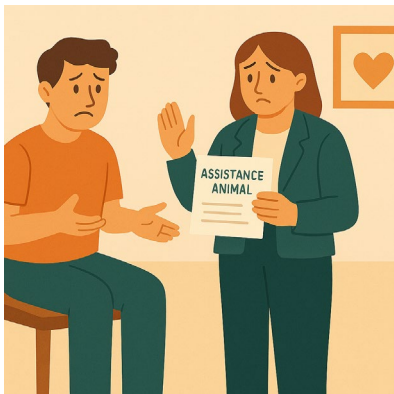
Why.

Please write your answer in the box.

## Question 2

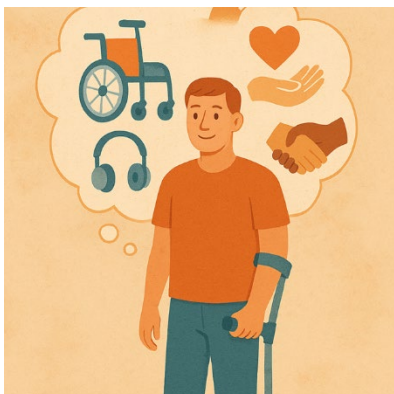


Is there anything else we need to know about psychiatric assistance dogs for people with psychosocial disabilities.

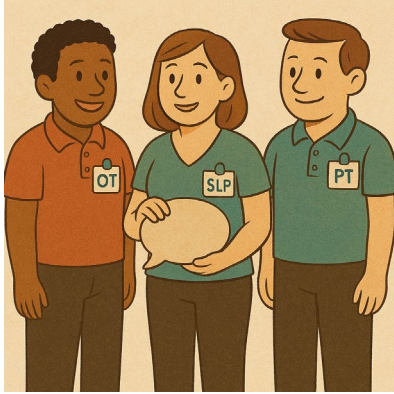


This could be things like

- Being able to get a psychiatric assistance dog



- Other supports you could use

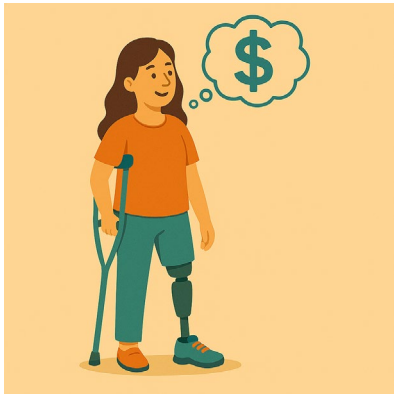


- Using other services like **allied health**

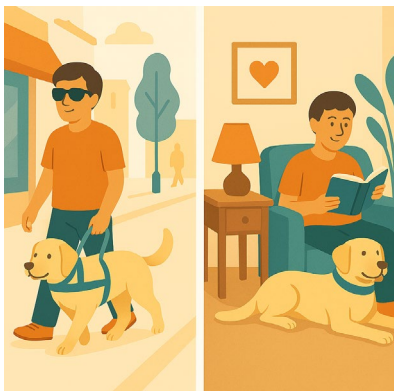
Allied health support people with their health.

They can be people like **occupational therapists**.

We call them **OT** for short.



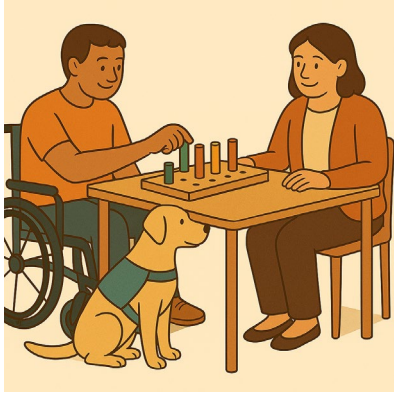
- How much it costs to have a psychiatric assistance dog



- Where psychiatric assistance dogs could be used

Like

- In public
- At home.



- How psychiatric assistance dog fits with other supports



- Being able to look after a psychiatric assistance dog



- Your age



- Your **gender**

People say what gender they are.

They might be

- A man
- A woman
- A different gender
- No gender.



- Your **ethnicity**

Ethnicity is a group of people who shares

- Culture
- Language
- History.





- Who you live with



- Where you live

Like

- In the city
- A remote area.

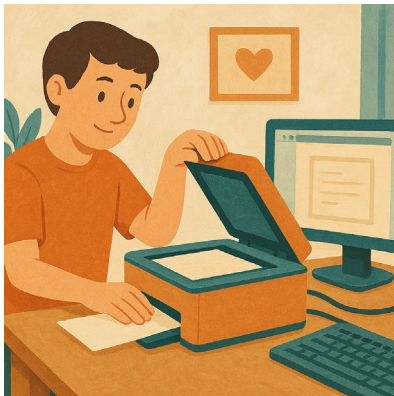


You can share anything you think will help us understand about psychiatric assistance dogs.

Please write your answer in the box.



Thank you for doing our survey.



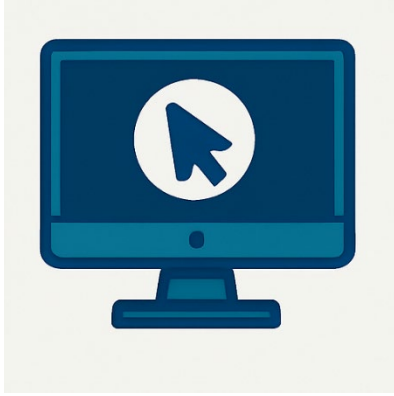
If you printed out the survey you need to

1. Scan it into your computer



2. Send it to us by email.

[disabilityevidence@health.gov.au](mailto:disabilityevidence@health.gov.au)



If you wrote your answers on the computer  
you need to

1. Send it to us by email.



You need to send your answers back to us  
before

11.59 at night

**Sunday** 9 November 2025.