



Australian Government

Department of Health, Disability and Ageing

# NDIS Evidence Advisory Committee Consultation

People who do **not** use Assistance

Animals anymore

Part 2





**Australian Government**

**Department of Health,  
Disability and Ageing**

The Australian Government Department of Health Disability and Ageing wrote this.

We say **DHDA** for short.

When you see the word **we** it means DHDA.



We wrote this in an easy to read way.

We use pictures to explain some ideas.

**Bold**

Not bold

We have some words in **bold**.

This means the letters are thicker and darker.

These are important words.



This is an Easy Read summary of an online **survey**.

Surveys have questions about your ideas.



We can answer any questions by email.

Email us [disabilityevidence@health.gov.au](mailto:disabilityevidence@health.gov.au)



You can ask for help to read this document.

You can ask

- A friend
- Family members
- A support person.



We recognise Aboriginal and Torres Strait Islander people as the **Traditional Owners** of the land we live on.



They were the **first people** to live on and use the

- Land
- Waters.

# Contents

Who is this survey for	5
What to do	8
Question 1	10
Question 2	11
Question 3	12
Question 4	15
Question 5	19
Question 6	22
Question 7	23

# Who is this survey for

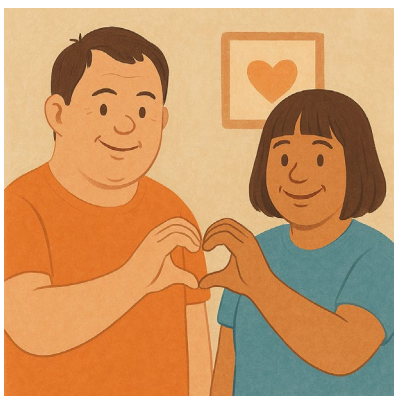


We made a **survey**.



This survey is **only** for people who do **not** use an assistance animal anymore and are

- Autistic



- Have an **intellectual disability**.

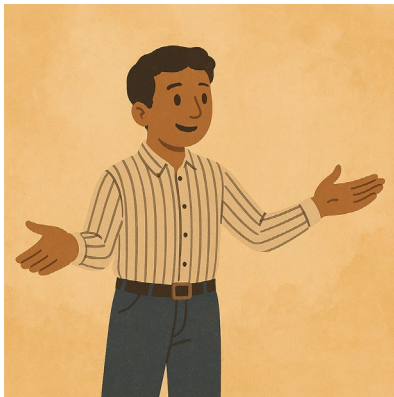
An intellectual disability can make it difficult to

- Learn new things
- Solve problems
- Communicate
- Do things on your own.



We have other surveys for people who

- Use assistance animals



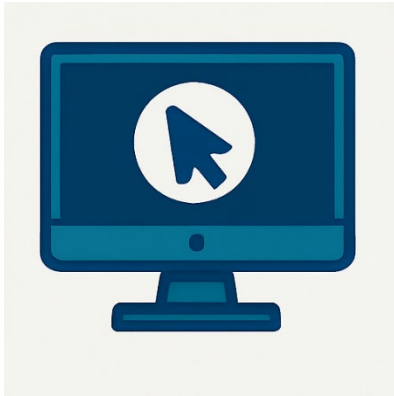
- Use something else



- Family or carers of people who are
  - Autistic
  - Have an intellectual disability

Who use assistance animals.

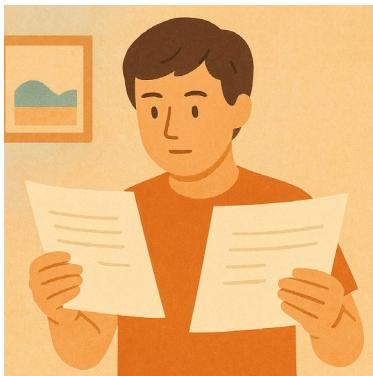




You can look at the other surveys on our website.

[consultations.health.gov.au/evidence-advisory-committee-eac/september2025](https://consultations.health.gov.au/evidence-advisory-committee-eac/september2025)

It is in Easy Read.



We have **2 parts** to this survey.



You need to do **part 1** first.

This is **part 2**.



You need to send both parts back to us by email.

You need to send it back before

11.59 at night

**Sunday** 9 November 2025.

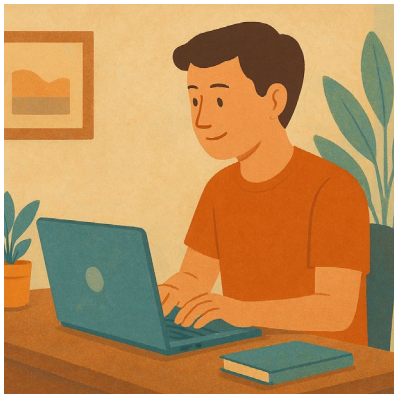
# What to do



You need to download both parts of the survey.

You can

- Write your answers



- Type your answers.



You need to send your answers back to us by email.

[disabilityevidence@health.gov.au](mailto:disabilityevidence@health.gov.au)





Each part will have some

- Information
- Questions.



There are no right or wrong answers.

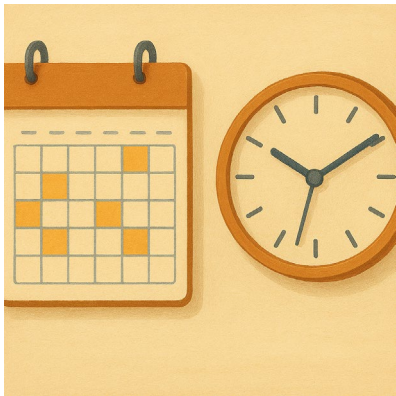
Do your best.



You can choose what questions to answer.

You do **not** have to answer them all.

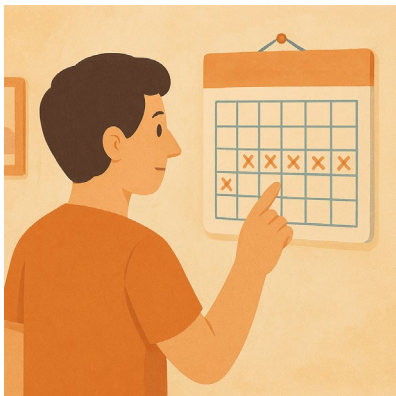
# Question 1



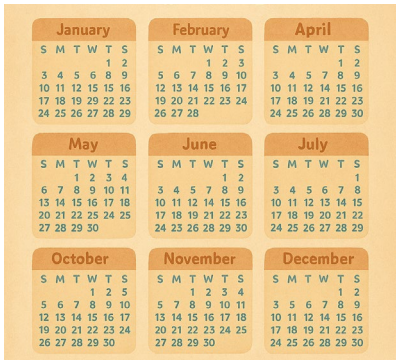
## Question 1

How long did you use an assistance animal.

Please tick 1 box.



- Less than 3 months



- 3 months to a year



- More than 1 year.

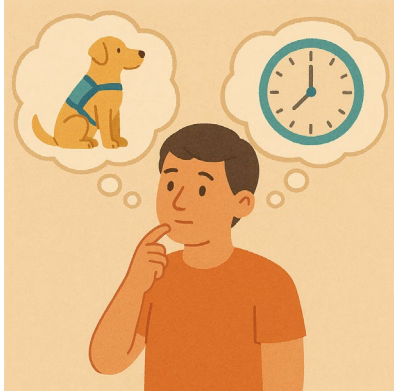
## Question 2



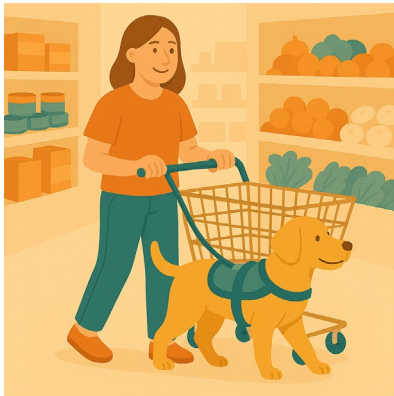
Why did you stop using an assistance animal.

Please write why in the box.

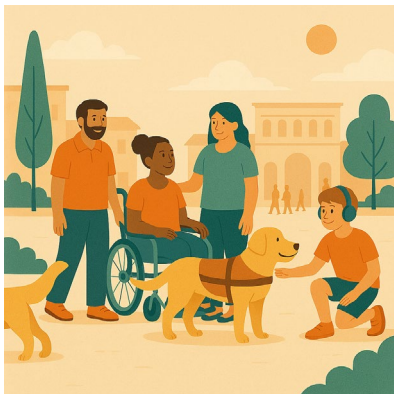
## Question 3



We want to know how often you used your assistance animal.



We think people would use their assistance animal every day.



You could tell us about

- Where your assistance animal supported you

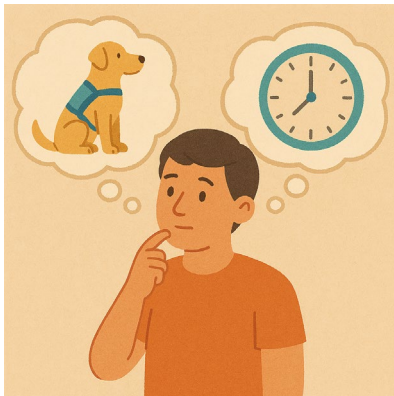
Like

- At home
- In public



- If your assistance animal was always with you

You can tell us about the times they were **not** with you.



- When did your assistance animal **not** work

Like if they



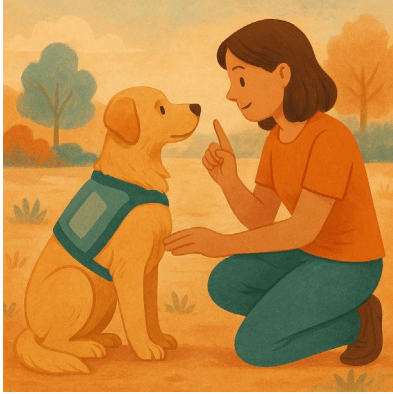
- Have a break
- Sleep.



Please write your answer in the box



## Question 4



Who gave you your assistance animal.

- A service provider like a trainer



- I did

I bought the assistance animal.



Please write your answer in the box.

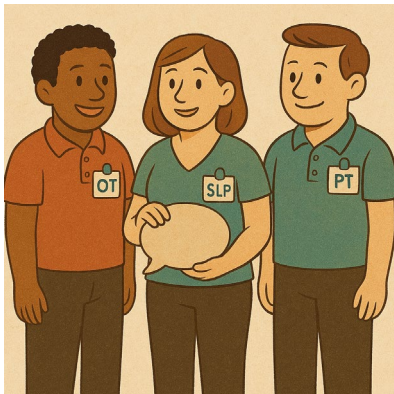


Who helped you use your assistance animal.

Please tick all the boxes that fit



- I looked after the assistance animal myself



- A therapist or **allied health** worker

Allied health support people with their health.

They can be people like **occupational therapists**.

We call them **OT** for short.



- Someone you paid to support you like a
- Carer
- Support worker



- Friend
- Family



- I do **not** know



- Someone else.

Please write who in the box

## Question 5



Did you have any

- Problems
- Safety issues

Using your assistance animal.



They could be things that lasted for

- A short time



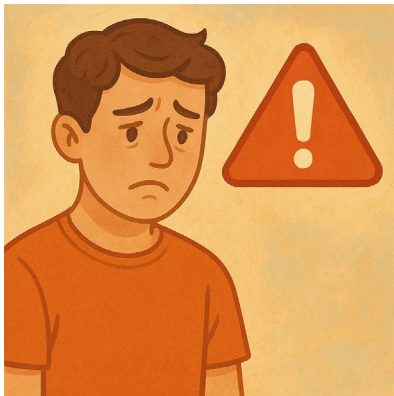
- A long time



Please tick 1 box.

No

I did **not** have any problems or safety issues.



Yes

I did have problems or safety issues

Please write what they were in the box.





If this question has made you feel

- Upset
- Worried

We have a list of people you can talk to.



[consultations.health.gov.au/evidence-advisory-committee-eac/september2025/supporting\\_documents/help-and-support-easy-readpdf](https://consultations.health.gov.au/evidence-advisory-committee-eac/september2025/supporting_documents/help-and-support-easy-readpdf)

It is in Easy Read.



If you have

- Pain
- Problems that do **not** go away

You need to get medical advice.

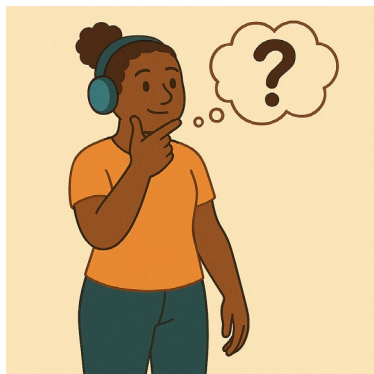
## Question 6



What support do you use now that helps you with the same things an assistance animal did.

Please write your answer in the box.

## Question 7



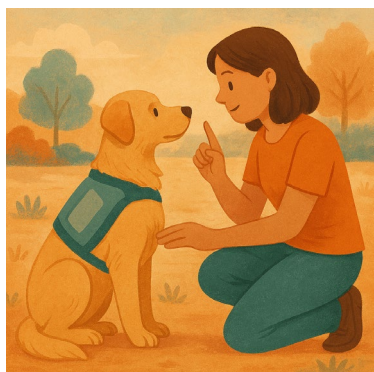
Is there anything else we need to know about assistance animals for

- Autistic people
- People with intellectual disability.



This could be things like

- The types of assistance animals



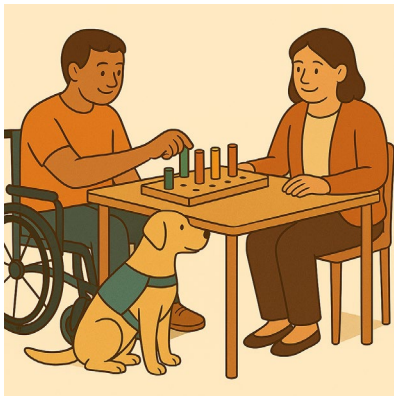
- People who supported you to use your assistance animal



- Other supports you could use



- If you need to choose a support because of how much it costs



- How your assistance animal fits in with other supports you use



- Your age



- Your **gender**

People say what gender they are.

They might be

- A man
- A woman
- A different gender
- No gender.



- Your **ethnicity**

Ethnicity is a group of people who shares

- Culture
- Language
- History.



- Who you live with



- Where you live

Like

- In the city
- A remote area.



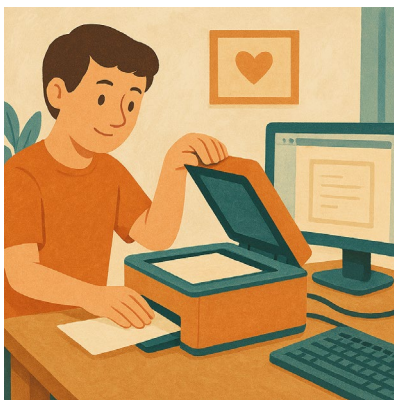


You can share anything you think will help us understand about assistance animals.

Please write your answer in the box.



Thank you for doing our survey.



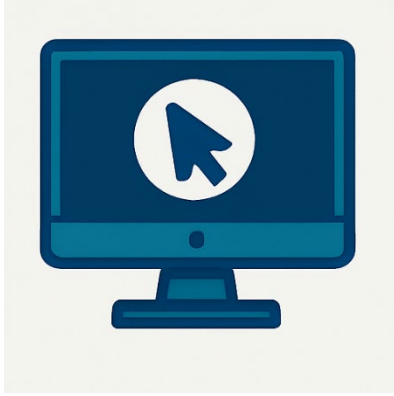
If you printed out the survey you need to

1. Scan it into your computer



2. Send it to us by email.

[disabilityevidence@health.gov.au](mailto:disabilityevidence@health.gov.au)



If you wrote your answers on the computer  
you need to

1. Send it to us by email.



You need to send your answers back to us  
before

11.59 at night

**Sunday 9 November 2025.**