



Australian Government

Department of Health, Disability and Ageing

NDIS Evidence Advisory Committee Consultation

People who do **not** use Assistance

Animals anymore

Part 1





Australian Government

**Department of Health,
Disability and Ageing**

The Australian Government Department of Health Disability and Ageing wrote this.

We say **DHDA** for short.

When you see the word **we** it means DHDA.



We wrote this in an easy to read way.

We use pictures to explain some ideas.

Bold

We have some words in **bold**.

Not bold

This means the letters are thicker and darker.

These are important words.



This is an Easy Read summary of an online **survey**.

Surveys have questions about your ideas.



We can answer any questions by email.

Email us disabilityevidence@health.gov.au



You can ask for help to read this document.

You can ask

- A friend
- Family members
- A support person.



We recognise Aboriginal and Torres Strait Islander people as the **Traditional Owners** of the land we live on.



They were the **first people** to live on and use the

- Land
- Waters.

Contents

Who is this survey for	5
What to do	8
About your disability	10
Question 1 support	16
Question 2 disability group	21
Question 3 outcomes	24
Question 4 compare with other supports	30

Who is this survey for

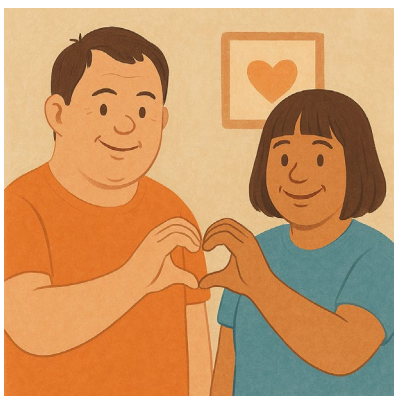


We made a **survey**.



This survey is **only** for people who do **not** use an assistance animal anymore and are

- Autistic



- Have an **intellectual disability**.

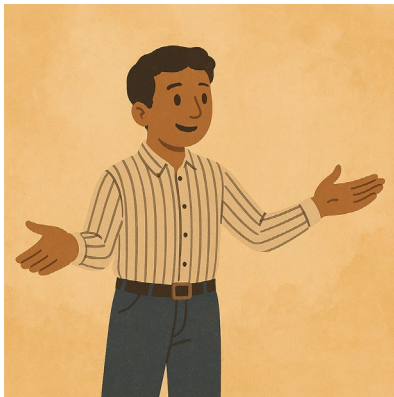
An intellectual disability can make it difficult to

- Learn new things
- Solve problems
- Communicate
- Do things on your own.



We have other surveys for people who

- Use an assistance animal

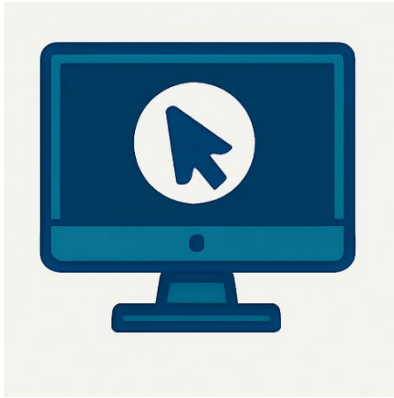


- Use something else



- Family or carers of people who are
 - Autistic
 - Have an intellectual disability

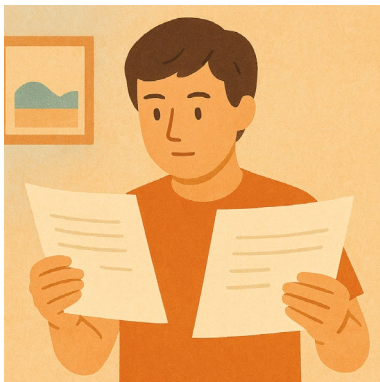
Who use assistance animals.



You can look at the other surveys on our website.

consultations.health.gov.au/evidence-advisory-committee-eac/september2025

It is in Easy Read.



We have **2 parts** to this survey.



You need to do **part 1** first.

This is **part 1**.



You need to send both parts back to us by email.

You need to send it back before

11.59 at night

Sunday 9 November 2025.

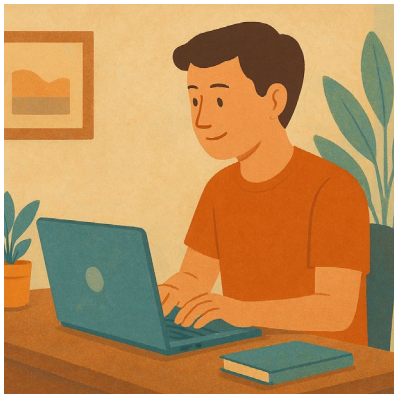
What to do



You need to download both parts of the survey.

You can

- Write your answers



- Type your answers.



You need to send your answers back to us by email.

disabilityevidence@health.gov.au



Each part will have some

- Information
- Questions.



There are no right or wrong answers.

Do your best.



You can choose what questions to answer.

You do **not** have to answer them all.

About your disability



1. What is your disability

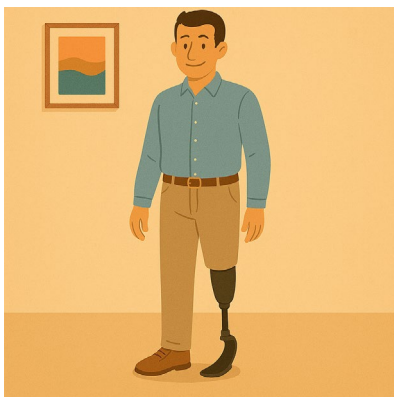
You can pick as many you have



- Acquired Brain Injury

This is anything that damages your brain after you were born like

- Stroke
- Injury to your head
- Diseases.



- Amputations

This is when you have an operation to remove part of your body like your leg.

They only do this if they have to.



- Arthritis

This is pain or swelling in your joints like in your hands.

It can happen in

- 1 part of your body
- Many parts of your body.



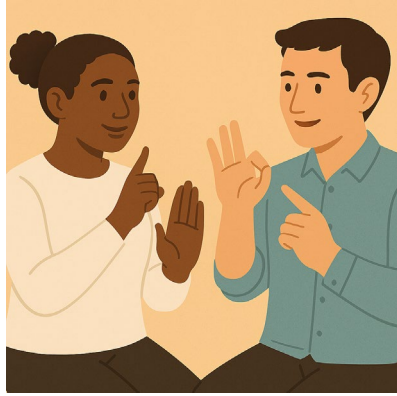
- Autism



- Cerebral palsy

This is a physical disability that can change how you

- Move
- Stand
- Sit.



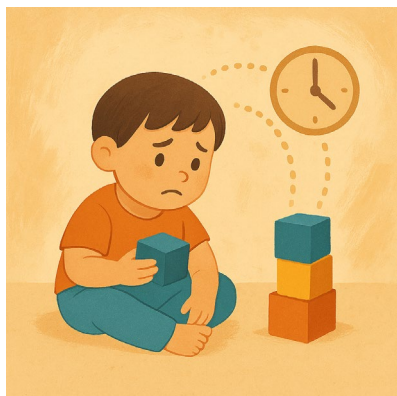
- Deaf or hard of hearing



- Dementia

This is when you have trouble

- Thinking
- Remembering
- Doing things for yourself.

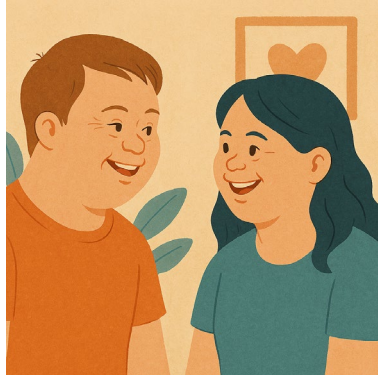


- Developmental Delay

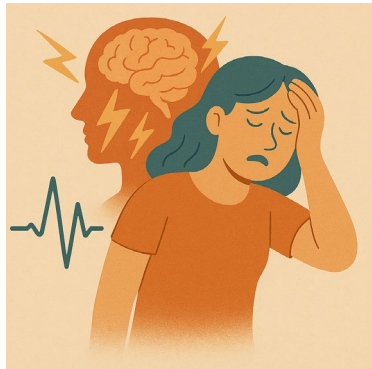
This is when someone learns slower than other people their age.

They might need extra help with

- Talking
- Moving
- Their emotions.

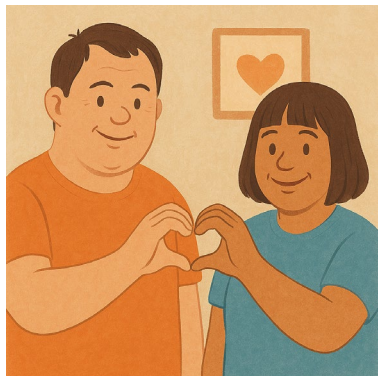


- Down Syndrome

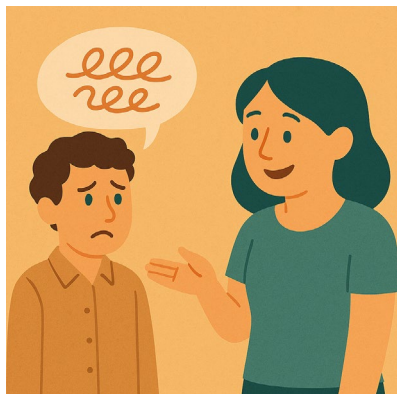


- Epilepsy

This is when someone has seizures.



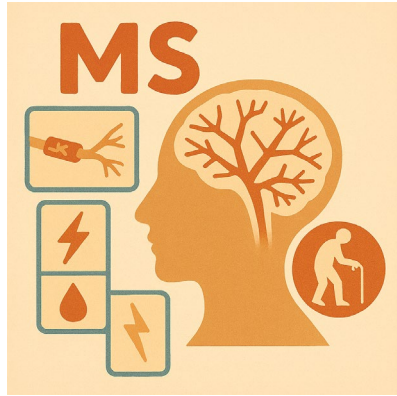
- Intellectual disability



- Language disorders

This is when someone has a hard time understanding or using language that is

- Spoken
- Written down
- Signed.



- Multiple sclerosis

This affects your

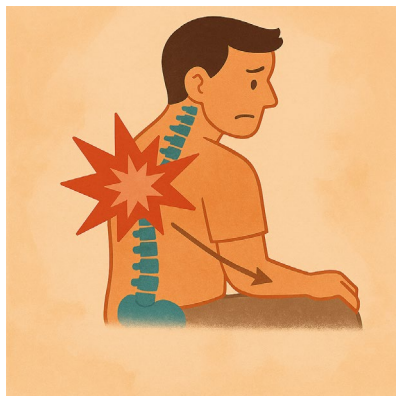
- Brain
- Spine
- Nerves

It is called **MS** for short.



- Psychosocial disability

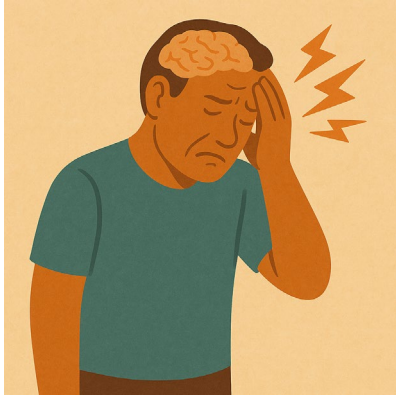
This is a disability because of your mental health.



- Spinal cord injury

This is when you have damaged your spine.

This can change what you can do for yourself.



- Stroke

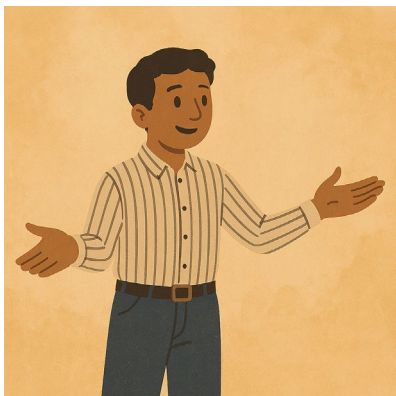
This is when the blood in your brain

- Is stopped for a time
- Can **not** get to where it needs to.

This can cause damage to your brain.



- Blind or have low vision



- Anything else

Please write in the box

Question 1 support



We want you to think about **assistance animals** for

- Autistic people
- People with intellectual disability.

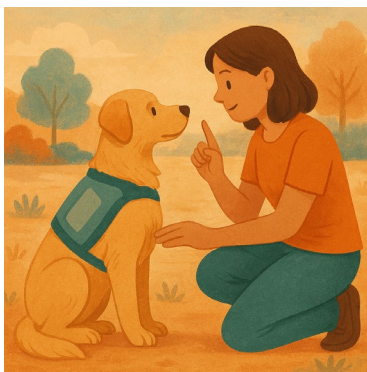


Assistance animals can be

- Dogs



- Other animals.

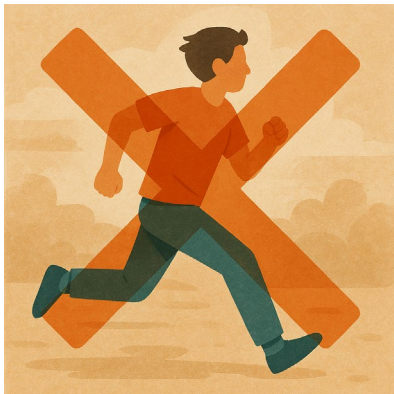


An assistance animal is **trained** to do things that might help a person with disability.

Trained means they have learned something.



The assistance animal usually lives with the person with disability they support.



Things they **aim** to help with are

- Keeping the person safe

Like helping people **not** run away

Aims are things you want to do.



- Making it calm for the person

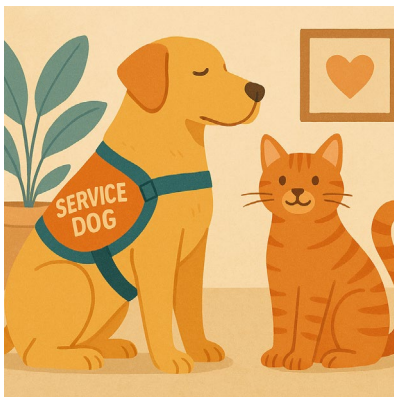


- Helping with sensory needs like touch



- Stopping behaviours that happen lots of times in a row

This can be called **repetitive behaviours**.



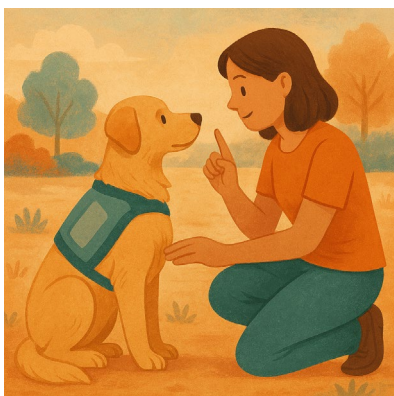
Assistance animals are different to pets.



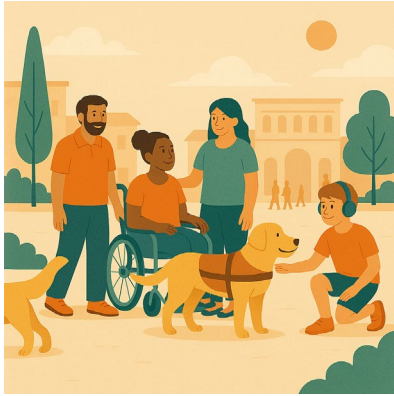
Assistance animals need to

- Have the right **accreditation**

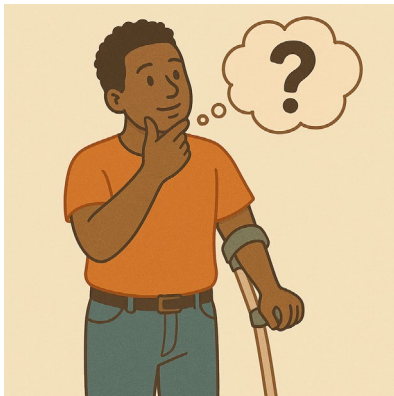
Accreditation means someone has come to check that the rules have been followed.



- Be trained to do certain things



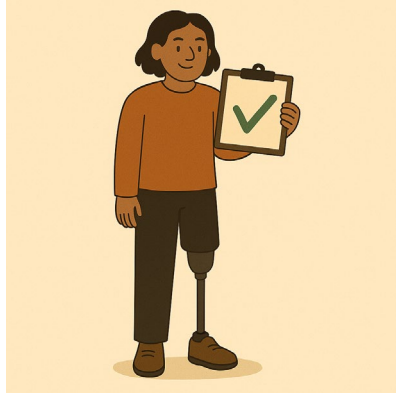
- Be safe and healthy in the community



Question 1

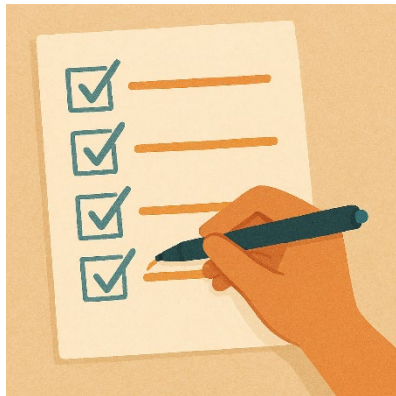
Do you think we have said everything about how assistance animals are used for people who

- Are Autistic
- Have intellectual disability.



Please tick only 1 box.

Yes



No

I want to change something.

Please write what you want to change in the box.

You can

- Add something
- Take something away.

Question 2 disability group

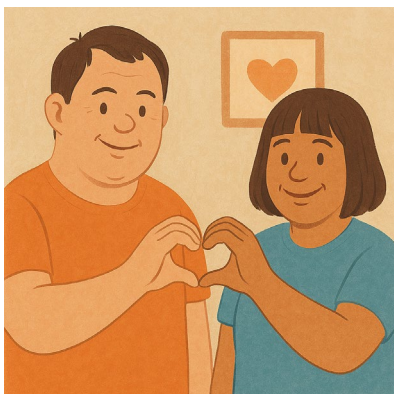


- We want to think about all the different groups of people who might use assistance animals



So far we think they are

- Autistic people



- People with intellectual disability



- Autistic people with intellectual disability.

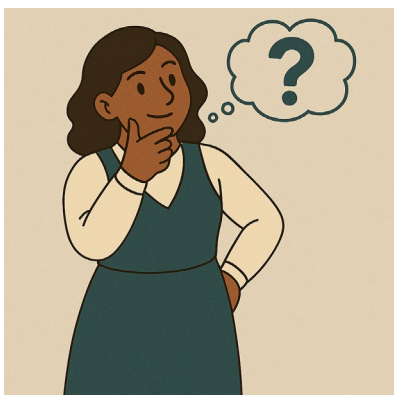


We think they could be

- Children

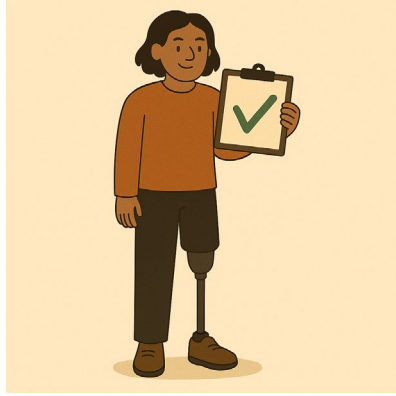


- Adults.



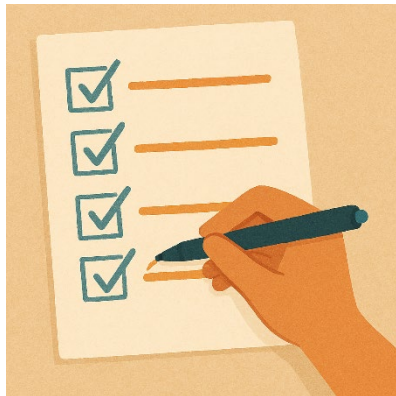
Question 2

- Do you think we have said all the groups of people who might use assistance animals



Please tick only 1 box.

Yes



No

I want to change something.

Please write what you want to add in the box.

You can

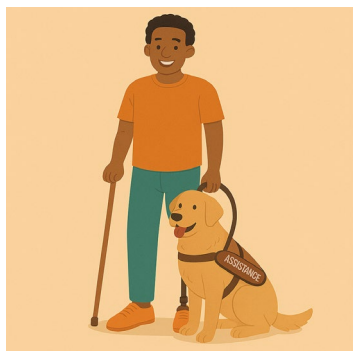
- Add something
- Take something away.

Question 3 outcomes



Supports are used to get good **outcomes**.

Outcomes are the things we see when our plans are working.

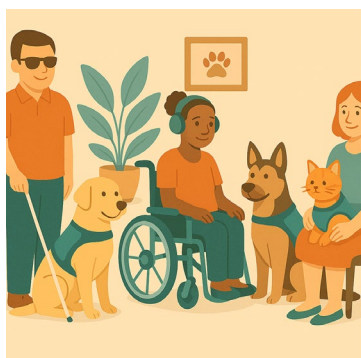


Outcomes can

- Make people's lives better



- Keep people safer.



We think that assistance animals for

- Autistic people
- People with intellectual disability

Aim to help with



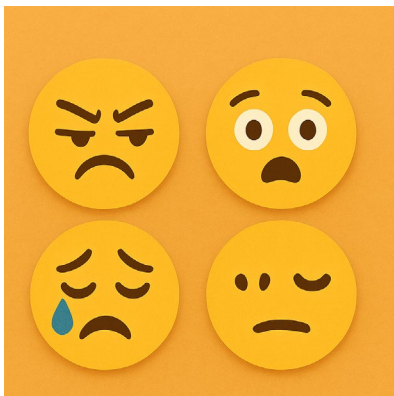
- Having a healthy body

This can be called physical health



- Having a healthy mind

This can be called mental health



- Managing emotions



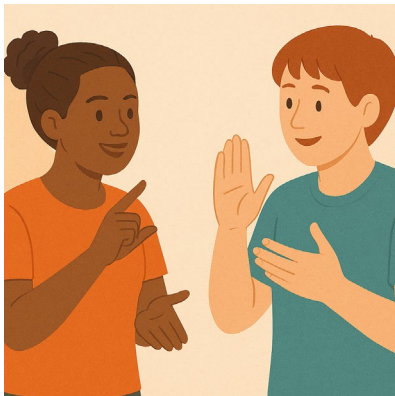
- Things they need to do every day

This is called daily living skills



- When they are feeling overwhelmed

This can be called sensory overload



- **Communicating** with other people



- Making friendships or relationships



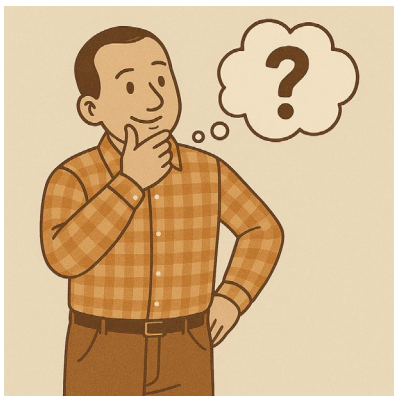
- Their family or carer having good outcomes



- **Quality of life**

Quality of life means being

- Happy
- Healthy.



Question 3

Do you think we have said the most important outcomes for this support.



Please tick only 1 box.

Yes

You can write extra things if you want.

You can put the outcomes you think are the most important.



No

I want to change the list.

Please write what you want to change in the box.

You can

- Add something
- Take something away.

Question 4 compare with other supports



We need to **compare** how well assistance animals work for

- Autistic people
- People with intellectual disability.



Compare means to look at 2 or more things.

You might look at what

- Is different
- Is the same
- Works best.

This will help us say if 1 support is best.



Other supports we could compare assistance animals with are

- Other animals

They could be

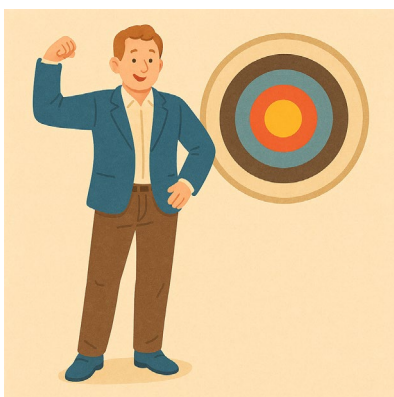
- Pets
- Emotional support animals

They can also be called **companion animals**.



- Supporting people with changing their behaviour

This can be called **behaviour interventions**.



We think these supports will aim to help people with the same **outcomes**.

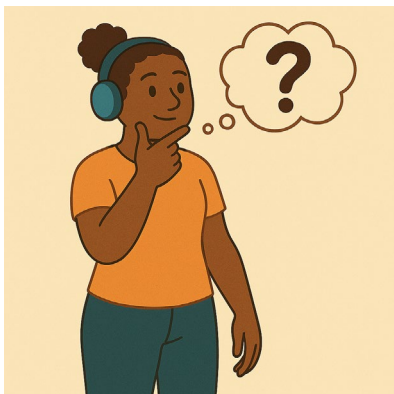
Outcomes are the things we see when our plans are working.



Have you tried different supports.



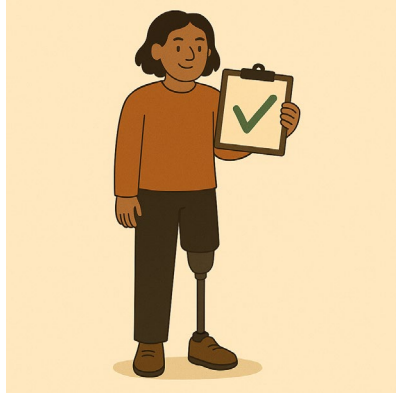
What supports would you use if you could **not** use an assistance animal.



Question 4

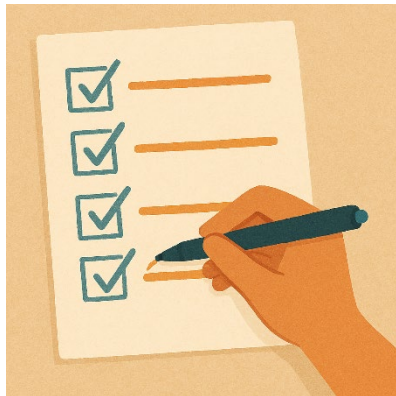
Are these the best supports to compare to assistance animals for

- Autistic people
- People with intellectual disability.



Please tick only 1 box.

Yes



No

I want to change something.

Please write what you want to change in the box.

You can

- Add something
- Take something away.



Thank you for doing **part 1**.

Please do **part 2** next.



You can take a break if you need it.

Images in this Easy Read must **not** be used or copied without permission