



Australian Government

Department of Health, Disability and Ageing

NDIS Evidence Advisory Committee Consultation

People who use something different to
Assistance Animals

Part 2





Australian Government

**Department of Health,
Disability and Ageing**

The Australian Government Department of Health Disability and Ageing wrote this.

We say **DHDA** for short.

When you see the word **we** it means DHDA.



We wrote this in an easy to read way.

We use pictures to explain some ideas.

Bold

Not bold

We have some words in **bold**.

This means the letters are thicker and darker.

These are important words.



This is an Easy Read summary of an online **survey**.

Surveys have questions about your ideas.



We can answer any questions by email.

Email us disabilityevidence@health.gov.au



You can ask for help to read this document.

You can ask

- A friend
- Family members
- A support person.



We recognise Aboriginal and Torres Strait Islander people as the **Traditional Owners** of the land we live on.



They were the **first people** to live on and use the

- Land
- Waters.

Contents

Who is this survey for	5
What to do	8
Question 1	10
Question 2	11

Who is this survey for

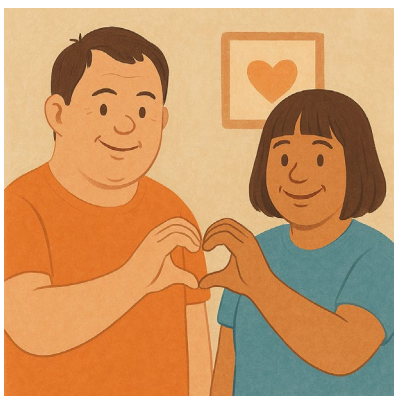


We made a **survey**.



This survey is **only** for people who use something different to an assistance animal and are

- Autistic



- Have an **intellectual disability**.

An intellectual disability can make it difficult to

- Learn new things
- Solve problems
- Communicate
- Do things on your own.



We have other surveys for people who

- Use assistance animals

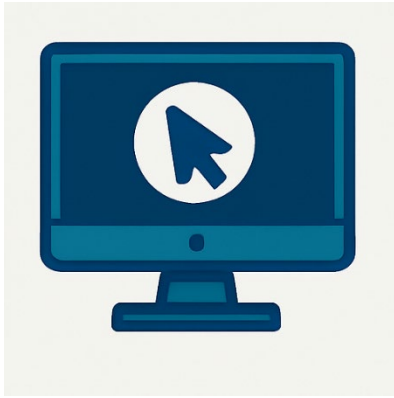


- Had an assistance animal but do **not** use it any more



- Family or carers of people who are
 - Autistic
 - Have an intellectual disability

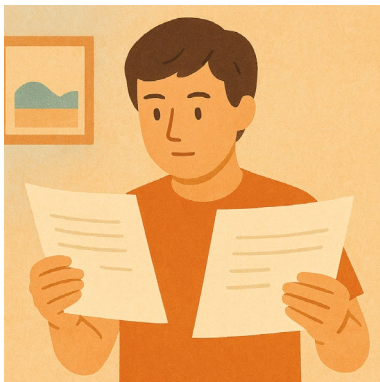
Who use assistance animals.



You can look at the other surveys on our website.

consultations.health.gov.au/evidence-advisory-committee-eac/september2025

It is in Easy Read.



We have **2 parts** to this survey.



You need to do **part 1** first.

This is **part 2**.



You need to send both parts back to us by email.

You need to send it back before

11.59 at night

Sunday 9 November 2025.

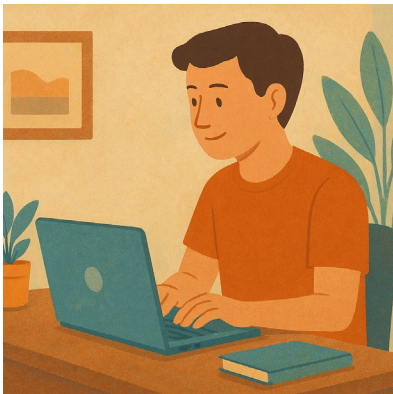
What to do



You need to download both parts of the survey.

You can

- Write your answers



- Type your answers.



You need to send your answers back to us by email.

disabilityevidence@health.gov.au



Each part will have some

- Information
- Questions.



There are no right or wrong answers.

Do your best.



You can choose what questions to answer.

You do **not** have to answer them all.

Question 1



Question 1

What do you use instead of an assistance animal.

Why.

Please write your answer in the box.

Question 2



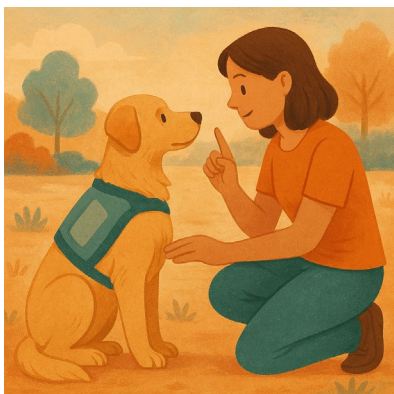
Is there anything else we need to know about assistance animals for

- Autistic people
- People with intellectual disability.



This could be things like

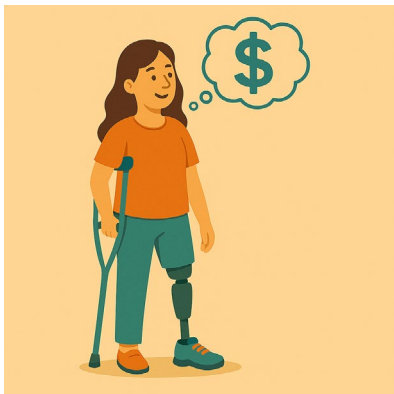
- The types of assistance animals



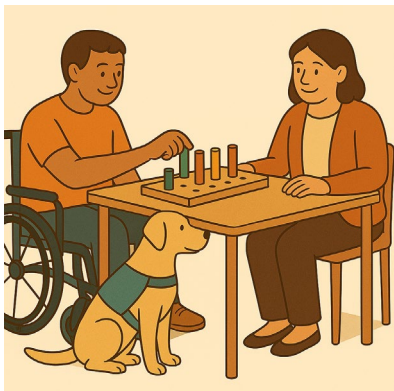
- People who support the use of an assistance animal



- Other supports you could use



- If you need to choose a support because of how much it costs



- How your assistance animal fits in with other supports you use



- Your age



- Your **gender**

People say what gender they are.

They might be

- A man
- A woman
- A different gender
- No gender.



- Your **ethnicity**

Ethnicity is a group of people who shares

- Culture
- Language
- History.



- Who you live with



- Where you live

Like

- In the city
- A remote area.

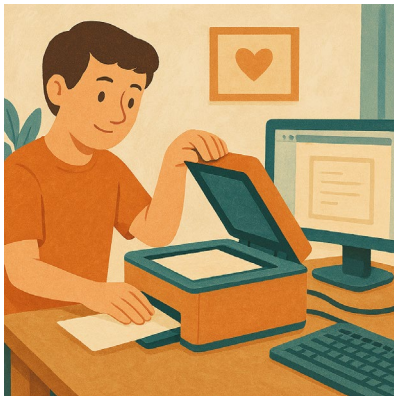


You can share anything you think will help us understand about assistance animals.

Please write your answer in the box.



Thank you for doing our survey.



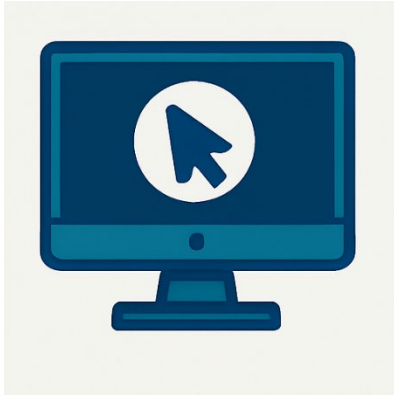
If you printed out the survey you need to

1. Scan it into your computer



2. Send it to us by email.

disabilityevidence@health.gov.au



If you wrote your answers on the computer
you need to

1. Send it to us by email.



You need to send your answers back to us
before

11.59 at night

Sunday 9 November 2025.