



Australian Government

Department of Health, Disability and Ageing

NDIS Evidence Advisory Committee Consultation

Families of people who use Early
Intensive Behaviour Interventions
Part 2





Australian Government

**Department of Health,
Disability and Ageing**

The Australian Government Department of Health Disability and Ageing wrote this.

We say **DHDA** for short.

When you see the word **we** it means DHDA.



We wrote this in an easy to read way.

We use pictures to explain some ideas.

Bold

We have some words in **bold**.

Not bold

This means the letters are thicker and darker.

These are important words.



This is an Easy Read summary of an online **survey**.

Surveys have questions about your ideas.



We can answer any questions by email.

Email us disabilityevidence@health.gov.au



You can ask for help to read this document.

You can ask

- A friend
- Family members
- A support person.



We recognise Aboriginal and Torres Strait Islander people as the **Traditional Owners** of the land we live on.



They were the **first people** to live on and use the

- Land
- Waters.

Contents

Who is this survey for	5
What to do	8
Question 1	10
Question 2	11
Question 3	16
Question 4	19
Question 5	23
Question 6	27
Question 7	33
Question 8	35

Who is this survey for



We made a **survey**.



This survey is **only** for families of people with disability who



- Use **Early Intensive Behaviour Interventions**.

Early Intensive Behaviour Interventions support children under 9 years old.

They can help children learn different skills.

We call it **EIBI** for short.



We have other surveys for people who

- Used EIBI but do **not** use it any more



- Use something else.



You can look at the other surveys on our website.

consultations.health.gov.au/evidence-advisory-committee-eac/february-2026

It is in Easy Read.



We have **2 parts** to this survey.



You need to do **part 1** first.

This is **part 2**.



You need to send both parts back to us by email.

You need to send it back before

11.59 at night

Sunday 29 March 2026.

What to do



You need to download both parts of the survey.

You can

- Write your answers



- Type your answers.



You need to send your answers back to us by email.

disabilityevidence@health.gov.au



Each part will have some

- Information
- Questions.



There are **no** right or wrong answers.

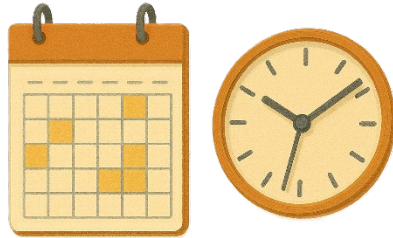
Do your best.



You can choose what questions to answer.

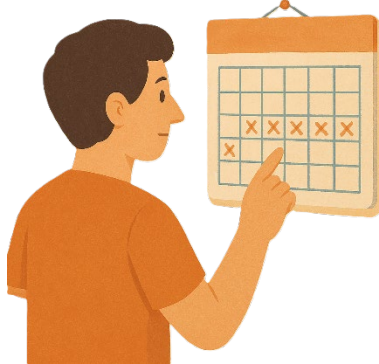
You do **not** have to answer them all.

Question 1



How long has the person you care for been using the support.

Please tick 1 box.



- Less than 3 months



- 3 months to a year



- More than 1 year.

Question 2



Is the person you care for still using the support.

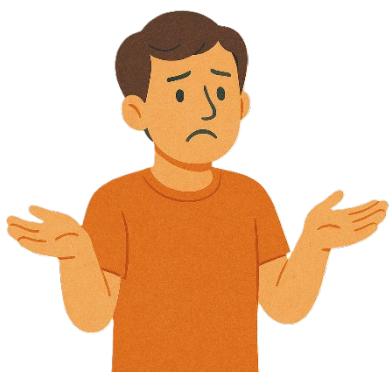


Please tick 1 box.

Yes



No



I do **not** know.



If the person is still using the support

- Do you think they will keep using the support

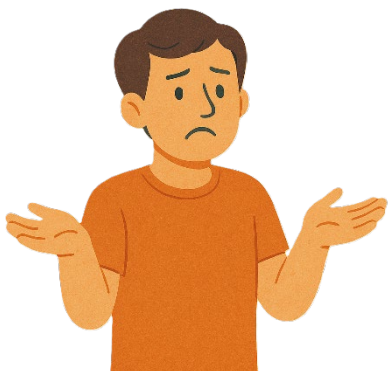


Please tick 1 box.

Yes



No



I do **not** know.



Please tell us why you chose that answer.

You could tell us about

- How well it works for them



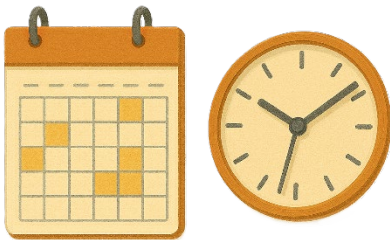
- Other supports they have tried



- How much it costs



- If they can get the support



- How long the support will last.



Please write why in the box.

Question 3



Have you had any

- Problems
- Safety issues
- Experience **harm**

Using the support.



Harm means that something bad might happen to you.



They could be things that lasted for a

- Short time



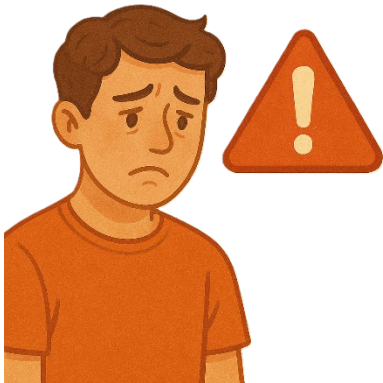
- Long time



Please tick 1 box.

No

I have **not** had any problems or safety issues.



Yes

I have had problems or safety issues

Please write what they are in the box.



If this question has made you feel

- Upset
- Worried

We have a list of people you can talk to.



consultations.health.gov.au/evidence-advisory-committee-eac/february-2026/supporting_documents/help-and-support-easy-readpdf

It is in Easy Read.

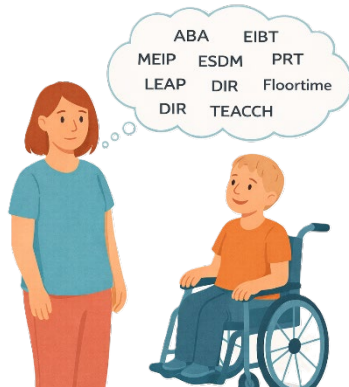


If you have

- Pain
- Problems that do **not** go away

You need to get medical advice.

Question 4



There are lots of types of EIBI.

The names of some of these are

Applied Behaviour Analysis



1. Applied Behaviour Analysis

We call it **ABA** for short.

Early Intensive Behaviour Treatment



2. Early Intensive Behaviour Treatment

We call it **EIBT** for short.

Murdoch Early Intervention Program



3. Murdoch Early Intervention Program

We call it **MEIP** for short.

Early Start Denver Mode



4. Early Start Denver Model

We call it **ESDM** for short.

Pivotal Response Treatment



5. Pivotal Response Treatment

We call it **PRT** for short.

Learning Experiences
Alternative Program



6. Learning Experiences Alternative Program

We call it **LEAP** for short.

Developmental Individual Difference
Relationship Based



7. Developmental Individual Difference Relationship Based

We call it **DIR** for short.

Floor time



8. Floor time.

This is part of DIR.

Treatment and Education of
Autistic and Related Communication
Handicapped Children



9. Treatment and Education of Autistic and Related Communication Handicapped Children

We call it **TEACCH** for short.



Do you know what type of EIBI they use.

Please write all the different types they have used in the box.

Question 5



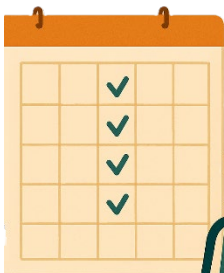
How often do they use EIBI.

Please tick 1 box.

- ✓ MONDAY
- ✓ TUESDAY
- ✓ WEDNESDAY
- ✓ THURSDAY
- ✓ FRIDAY
- ✓ SATURDAY
- ✓ SUNDAY



- Every day



- Every week



- A different number of days.

Please write your answer in the box.



How much time do they spend every week doing EIBI

- Less than 5 hours



- Between 20 hours and 30 hours

- Between 30 hours and 40 hours

25



- More than 40 hours



- A different amount of time.

Please write your answer in the box.

Question 6



Where does the person you care for do EIBI



- In a clinic



- At a childcare centre



- In a school



- At home



- Somewhere else

Please write where in the box



Who does EIBI for the person you care for.

Please tick all the people who support the person you care for



- **Psychologist**

Psychologists help people with how they

- Think
- Feel
- Act.



- An allied health worker like an **Occupational Therapist**

Occupational therapist helps people with everyday skills like

- Looking after their body
- Learning
- Social skills.

Please write who in the box.



- Allied health assistant or therapy assistant



- A paid carer or support worker



- Teacher



- Childcare worker



- Parent or carer



- Family or friends



- I do **not** know



- Someone else.

Please write who in the box.

Question 7



Were you or someone else trained to help the person you care for use the skills they learned in EIBI.

This could be a

- Parent trained to use EIBI at home

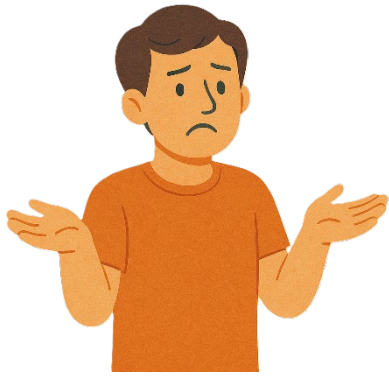


- Teacher trained to use EIBI in school

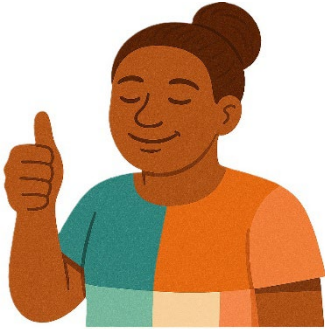


Please tick 1 box.

No



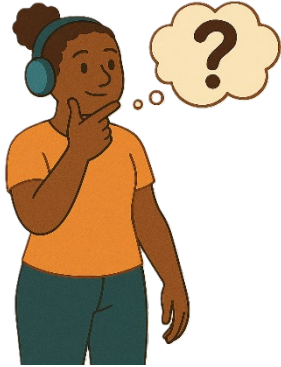
I do **not** know.



Yes

Please write who in the box.

Question 8



Please tell us anything else you think we need to know about this support.



This could be things like

- Being able to get EIBI



- Other supports that have the same goals



- Being able to have allied health workers support you



- If you needed to choose a support because of how much it costs



- Where you use EIBI



- How a EIBI fits in with other supports you use



- Your age



- Your **gender**

People say what gender they are.

They might be

- A man
- A woman
- A different gender
- No gender.



- Your **ethnicity**

Ethnicity is a group of people who shares

- Culture
- Language
- History.



- Who you live with



- Where you live

Like

- In the city
- A remote area.



You can share anything you think will help us understand how you use the support.

Please write your answer in the box.



Thank you for doing our survey.



If you printed out the survey you need to

1. Scan it into your computer



2. Send it to us by email.

disabilityevidence@health.gov.au



If you wrote your answers on the computer
you need to

1. Send it to us by email.



You need to send your answers back to us
before

11.59 at night

Sunday 29 March 2026.

Some images in this Easy Read were made using AI.

You must **not** share or copy any of the images without permission.

January 2026.